

Investing in Australia's Gold Legacy

CORPORATE PRESENTATION

Q2 2026



CROSSROADS
GOLD

TSXV:CRG

OTCQB:CRGCF

FSE: FI1

Forward Looking Statements & Disclaimer

DISCLAIMER

This corporate presentation (the "Presentation") is being furnished on a confidential basis, in order to provide readers certain information with respect to the business and operations of Crossroads Gold Corp. (the "Company") current as of May 7, 2026, unless otherwise stated. The information in this Presentation is provided in summary form and does not purport to be complete. Each reader, by accepting delivery of this document, agrees not to make a photocopy or other copy or to divulge the contents hereof to any person other than a legal, business, investment, or tax advisor in connection with obtaining the advice of such person in respect of the Company.

Recipients of this Presentation who are considering acquiring securities of the Company are reminded that this Presentation is not intended to be, nor should it be, relied upon as advice to investors or potential investors and does not take into account the investment objectives, financial condition or needs of any particular investor. Statements in this document are made as of the date of this document unless stated otherwise, and neither the delivery of this document at any time, nor any sale hereunder, shall under any circumstances create an implication that the information contained herein is correct as of any subsequent date.

Neither the issue of this Presentation nor any part of its contents is to be taken as any form of contract, commitment or recommendation on the part of the Company or the directors of same to proceed with any transaction or accept any offer and the right is reserved to terminate any discussions or negotiations with any prospective investors. The Company reserves the right without any notice or liability to the recipient of this Presentation or its advisers to: (i) change any of the procedures, timetable or requirements or terminate negotiations at any time prior to the signing of any binding agreement with investors; (ii) provide different information or access to information to different persons; (iii) agree to variations to the property, rights and liabilities; and (iv) to negotiate at the same time with more than one person.

Any securities being offered in connection with this Presentation shall be offered and sold only (1) to "accredited investors" or similar exemption in Canada under Canadian securities laws; (2) to U.S. "accredited investors" (as defined in Rule 501(a) of Regulation D under the Securities Act of 1933, as amended (the "U.S. Securities Act")) and to qualified institutional buyers (as defined in Rule 144A under the U.S. Securities Act) in compliance with Rule 506(b) of Regulation D and/or Section 4(a)(2) of the U.S. Securities Act and applicable state securities laws; or (3) in offshore transactions outside Canada and the United States to persons, other than U.S. Persons, in compliance with Regulation S under the U.S. Securities Act and other local applicable securities laws. By accepting delivery of this Presentation, the recipient represents and warrants to the Company that the recipient qualifies with such requirements. Any securities described herein and any security issued upon their conversion have not been, and will not be, registered under the U.S. Securities Act and may not be offered or sold within the United States or to, or for the account or benefit of, "U.S. Persons" (as defined in Regulation S under the U.S. Securities Act), except pursuant to an exemption from, or in a transaction not subject to, the registration requirements of the U.S. Securities Act and applicable state securities laws.

INDUSTRY AND MARKET DATA

This Presentation includes market and industry data and forecasts that were obtained from third-party sources, industry publications and publicly available information. Third-party sources generally state that the information contained therein has been obtained from sources believed to be reliable, but there can be no assurance as to the accuracy or completeness of included information. Although management believes it to be reliable, the Company has not independently verified any of the data from third-party sources referred to in this Presentation, or analyzed or verified the underlying studies or surveys relied upon or referred to by such sources, or ascertained the underlying economic assumptions relied upon by such sources.

ACCURACY OF INFORMATION

Accuracy of Information: Readers are directed to the public disclosure of the Company available under the SEDAR+ profile ("SEDAR+") at www.sedarplus.ca. Information contained in this presentation was believed to be accurate at the time it was posted but may be superseded by more recent public disclosure of the Company. The Company makes no representations or warranties as to the accuracy, reliability, completeness or timeliness of the information in this presentation

FORWARD-LOOKING STATEMENTS

Certain information presented in this Presentation constitutes forward-looking information or forward-looking statements (collectively, "forward-looking statements") within the meaning of applicable securities laws. Such forward-looking statements include statements with regard to: the Pheasant Creek and Steiglitz projects; proposed near term activities; and the business goals and objectives of the Company.

Forward-looking statements in this Presentation involve known and unknown risks, uncertainties and other factors which may cause the actual results, performance or achievements of the Company to be materially different from any future results, performance or achievements expressed or implied by the forward-looking statements. These risks, uncertainties and other factors include, but are not limited to, the Transaction may not close on the terms anticipated, or at all; risks relating to the availability of financing for the resulting issuer; risks relating to the receipt of all requisite approvals for the Transaction, including the approval of the stock exchange and other necessary approvals; risks associated with the business of the Company given its limited operating history; business and economic conditions in the mineral industry generally; the supply and demand for labour and other project inputs; risks relating to unanticipated operational difficulties (including unanticipated events related to mineral exploration); changes in general economic conditions or conditions in the financial markets; changes in the price of gold and currency exchange; and other risk factors as detailed from time to time.

In connection with the forward-looking statements contained in this Presentation, the Company has made numerous assumptions based on information and/or beliefs currently available to the Company. Although the Company believes that the assumptions inherent in the forward-looking statement are reasonable, forward-looking statements are not a guarantee of future performance and accordingly undue reliance should not be put on such information due to the inherent uncertainty therein. The actual results, performance or achievements of the Company may be materially different from any future results, performance or achievements expressed or implied by such forward-looking statements.

Forward-looking statements contained in this Presentation are made as of this date, and the Company does not undertake any duty to update such information except as required under applicable law.

Technical Information

The scientific and technical information contained in this Presentation was reviewed and approved by Mr. Neil (Rex) Motton, MAusMM (CP), FSEG, a "Qualified Person" ("QP") for the Company under the meaning of National Instrument ("NI") 43-101 – *Standards of Disclosure for Mineral Projects*. Mr. Motton is the President & CEO and a Director of the Company and therefore is not considered independent of the Company. Mr. Motton has visited the projects discussed in this presentation.

About Us

Crossroads Gold is a gold exploration company backed by the Fiore Group focused on high-potential projects in southeastern, Australia—one of the world's premier gold jurisdictions. The Company's portfolio includes the Pambula Gold Project, the historic Steiglitz Gold Project in the renowned Bendigo Gold Belt, the large-scale Pheasant Creek Project adjacent to Southern Cross Gold's Sunday Creek discovery, and the Club Terrace Project. Crossroads is based in Canada and Australia.



Investment Highlights

01 Experienced In-Country Team

Led by Australian exploration geologist and CEO Rex Motton, former COO of Fosterville South, with 40+ years of global experience

02 Tier 1 Mining Jurisdiction

Australia: Industry-leading mining jurisdiction, near numerous major operating gold mines and projects (Fosterville, Sunday Creek, Reedy Creek)

03 Proven Geological Address

Under-explored gold projects located along key structural corridors with strong analogues to major nearby discoveries, with potential for high-grade gold

04 Backed by the Fiore Group

Industry-leading private firm backed by Frank Giustra & Gord Keep focused on natural resources. \$1.0bn+ raised for mining companies in 2023-2026 YTD ⁽¹⁾

05 Fully Funded Phase 1 Program

Recent \$5.2M financing with near-term work program planned for H1 2026 and targeting near-term Phase 1 drill program

06 Adjacent to Sunday Creek

Pheasant Creek: 232km² land package adjacent to the Sunday Creek discovery by Southern Cross (TSX: SXGC, \$2.8bn market cap⁽²⁾)

07 Steiglitz: High Grade Potential

Historical high-grade producer (250k oz @ 38 g/t Au) from late 1800's (top 10 in Bendigo Zone), reinforcing potential for new discoveries with modern exploration

08 Infrastructure Advantage

Year-round project access with proximity to roads, power and services, located close to Melbourne

Leadership Team: Management & Advisors

Australia Advantage: In-country Australian exploration geologist CEO Rex Motton

Rex Motton, MAusMM(CP), FSEG
CEO, Director

Exploration geologist based in Victoria, Australia with 40+ years of exploration experience. Former COO of Fosterville South (Great Pacific Gold). Experience as a geologist in Australia, South America, Jamaica, and the Philippines

Brenda Nowak
CFO, Corporate Secretary

VP, Corporate Finance with the Fiore Group, also Corporate Secretary of North Arrow Minerals; formerly with Cornish Metals, Filo Mining, NGEx Minerals, Kaminak Gold and Northair Group of Companies

Carson Sedun, MBA
VP, Corporate Development

Former Director, Corporate Development with Northstar Clean Tech, former VP of Stronghold Silver, Advisor to Core Gold, Associate, Investment Banking at Canaccord Genuity and Dundee Capital Markets. MBA from Schulich School of Business, B.Comm from McGill University

Ryan Weymark, P.Eng.
Advisor

Partner with the Fiore Group, President and Co-Founder of Fuse Advisors, Director and Co-Founder of Selkirk Copper, Technical Advisor of Dolly Varden Silver, Co-Founder of West Red Lake Gold, Strategic Advisor and Co-Founder of Nations Royalty, Executive VP of Cambria Gold Mines

Rob McLeod
Advisor

Partner and Lead Technical Advisor with the Fiore Group, CEO & Director of Cambria Gold Mines, Director of Dolly Varden Silver and NexGold, Director & Co-Founder of Nations Royalty and Selkirk Copper, Advisor to West Red Lake Gold, former CEO and VP. Ex. of IDM Mining and Underworld Resources

Gordon Keep, MBA
Advisor

Partner with the Fiore Group and CEO of Fiore Management & Advisory. Former Managing Director of Endeavour Financial, SVP of Lion's Gate Entertainment and VP, Corporate Finance at Yorkton Securities. Retired Professional Geologist

James Hutton, MBA
Advisor

37 years of resource and capital markets experience. Former CEO of Canadian Dominion Resources, formerly the largest flow-through fund in Canada, and Pres & COO of CMP Resources (jointly completed \$1.4bn in flow-through transactions)

Leadership Team: Board of Directors

Experienced technical and geology-focused Board of Directors




Derrick Pattenden, CFA
Director

President, CEO & Director of Nations Royalty with over 15 years of M&A experience as former Director, Investment Banking at Canaccord Genuity (>C\$20 billion of M&A transaction value). Bachelor of Applied Science in Mining Engineering from UBC and holds the CFA designation



Paul McNeill, P.Geo., ICD
Director

VP Exploration of NexGold, former VP Exploration of Signal Gold and Aurora Energy. Strong technical expertise in orogenic gold deposits, grassroots exploration discovery & development (including analogous deposits to Pheasant Creek & Steiglitz)



Rex Motton, MAusMM(CP), FSEG
CEO, Director

Exploration geologist based in Victoria, Australia with 40+ years of exploration experience. Former COO of Fosterville South (Great Pacific Gold). Experience as a geologist in Australia, South America, Jamaica, and the Philippines



Joaquin Marias, P.Geo.
Director

Geologist and mining executive with over 16 years of experience. Current President, CEO & Director of Argenta Silver (raised \$60M+), Director of Andean Metals, former Project Geologist with Fiore Mining, Dolly Varden Silver, SolGold and Chief Geologist & Country Manager for Condor Prospecting (Argentina)

Leadership Team with 200+ years of combined experience in mineral exploration, project development, capital markets, finance and M&A experience



Crossroads is a proud member of the Fiore Group

The Fiore Group

An Industry Leader in Global Mining

Industry-leading private firm backed by Canadian mining entrepreneurs Frank Giustra and Gord Keep managing a broad portfolio of public and private equity investments, specializing in natural resources. They have three decades of value creation by way of starting mining companies around the world, including Aris Gold, Goldcorp, Endeavour Mining, Leagold, and UrAsia Energy.

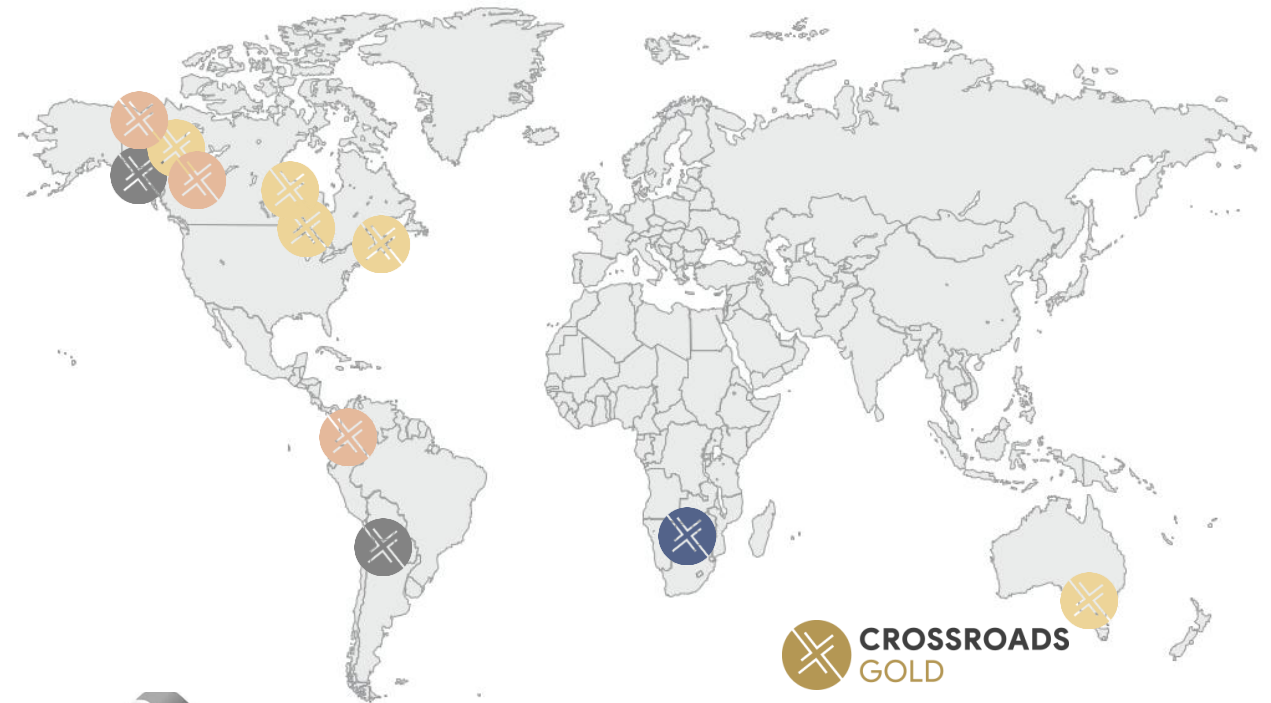
\$3.2Bn

in Market Cap
Today⁽¹⁾

\$1.0Bn+

in Equity Capital Raised
from 2023-2026YTD⁽²⁾

FIÖRE



Fiore Group of Companies



-  Copper
-  Nickel
-  Gold
-  Silver

Crossroads Projects Overview

Strategically located along the historic Bendigo Zone (Steiglitz) and the Fosterville Trend in the Melbourne Zone (Pheasant Creek), along with drill-ready Pambula Project



The Victoria State Gold Rush – The Players

Victoria has produced 80M+ oz of gold over its history

\$147B



Fosterville Gold Mine

- Largest gold producer in Victoria
- Began production in 2005 and produced 4.4M oz (2024YE). 225,000 oz Au per year (2024A), ~160,000 oz (2025A), ~150,000 (2026E)
- P&P Reserves: 1.7M oz Au @ 5.37 g/t Au

\$2.8B



Sunday Creek Project

- 200,000m drilling planned (A\$60M)
- 107,000m drilled to date, with 235 drillholes
- Drill Highlights: 2.7m @ 892 g/t AuEq from 684.3m, 3.4m @ 452 g/t AuEq from 508.4m
- Secured C\$143M in funding @ \$4.50/sh in 2025

\$1.7B



Bendigo Gold Project

- Primarily focused on the Plutonic Gold Belt operating mine in Western Australia (>100k oz/year)
- Bendigo Project: exploration with a high grade resource (160k oz @ 7.7 g/t Au)

\$2.5B



Costerfield Au-Sb Mine

- 3 operating mines (2 in Aus, 1 in Sweden)
- Costerfield underground mining since 2006
- 2024A Production: 43,346 oz Au, 1,282t Sb
- ~500,000 oz Au produced (2007-2024)
- M&I resources: 1.2Mt @ 8.3 g/t Au

\$116M



Blue Moon Project

- Surrounds the historical Bendigo Gold Belt (22M oz @ 15 g/t Au)
- Strong institutional ownership (Jupiter, Franklin)
- 2 diamond drill rigs drilling ongoing
- A\$22M in cash

\$42M



Walhalla Gold Project

- Recently completed 1:1 spinout from Great Pacific Gold (GPAC.V) of Walhalla Gold project into new CSE-listed Walhalla Gold (CSE.WAU)
- Pinnacle target initially targeted for drilling in Q2-26
- Historic production of 1.5M oz @ 33.59 g/t Au

\$13M



Reedy Creek Project

- Located 10km from and adjacent to Sunday Creek
- Acquired from Great Pacific in 2025
- Fully funded 10,000m Phase 2 drilling ongoing
- Historical high-grade intercepts: 11m @ 31.4 g/t Au
- Raised >C\$9M to date

\$16M



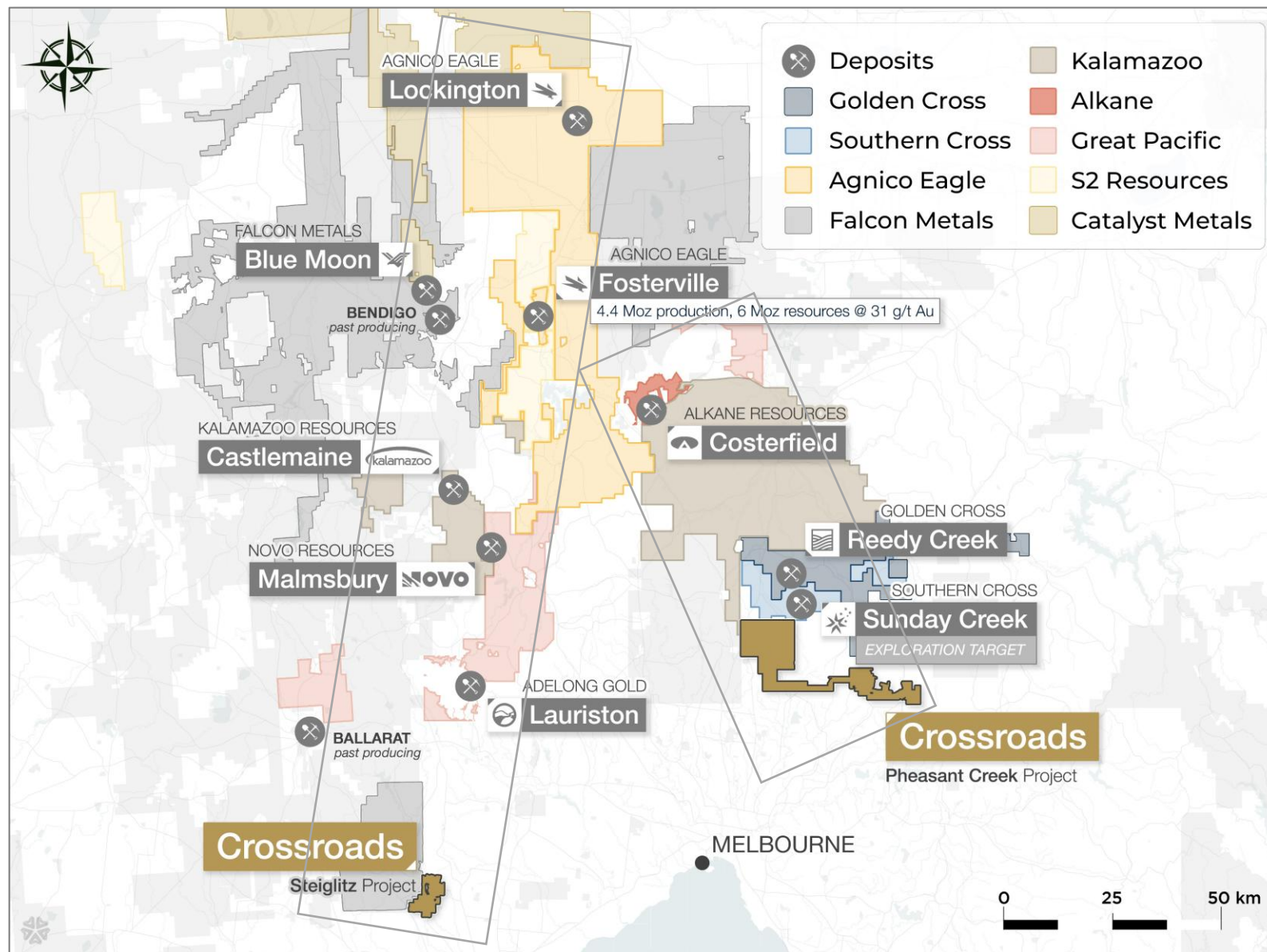
Lauriston & Apollo Projects

- Lauriston: 287km² landholding, Fosterville geological parallels w/ historical production >230k @ 20.7 g/t Au
- Apollo: Maiden drilling ongoing

The Neighbourhood

Strategically located along the Fosterville Trend (Steiglitz) and adjoining the Sunday Creek Project (Pheasant Creek) with similar styles of mineralization

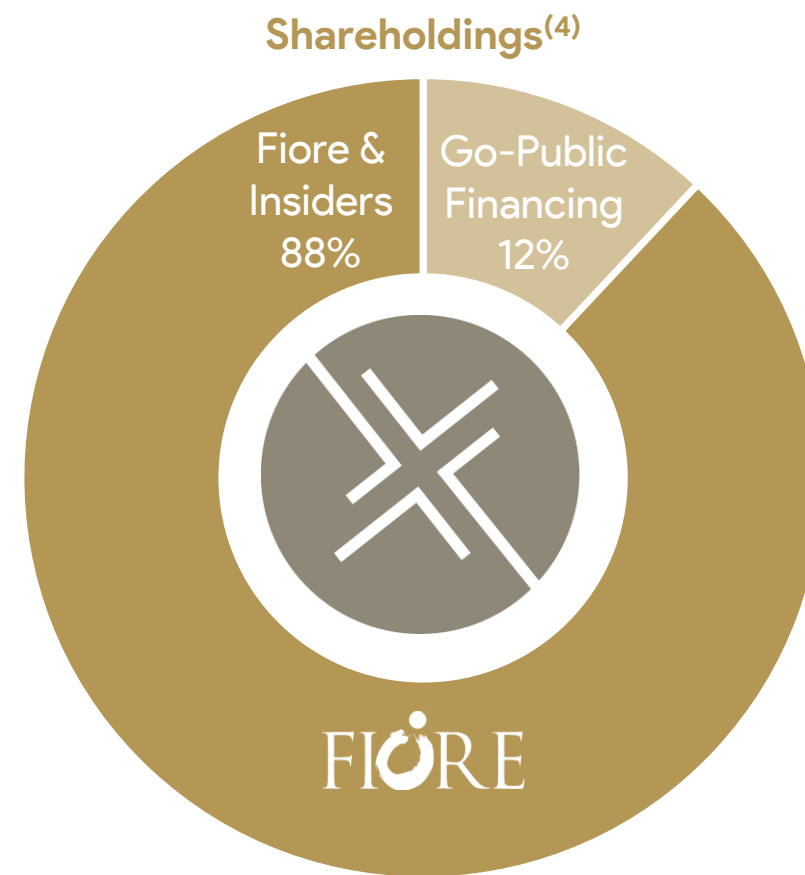
- **Steiglitz:** Within the Fosterville Subdomain of the Bendigo Zone and on western margin of the Selwyn Block, a highly prospective location for the discovery of Fosterville type epizonal gold-antimony deposits
- Fosterville Gold Mine & Sunday Creek Au-Sb discovery highlight the potential of mid-late Devonian shear/fault structures and the importance of epizonal gold-antimony mineralization for high grade deposits
- **Pheasant Creek:** Gold mineralization occurs as epizonal fault-controlled quartz veins sometimes associated with earlier dioritic dykes (analogous to Sunday Creek). 6km of under explored auriferous dykes mined in the 1890s. Strong pathfinder anomalism (Au-As-Sb)



Capital Structure

Funded by \$5.2M financing and backed by the Fiore Group with strong shareholder base

TSXV:CRG OTCQB:CRGCF FSE:FI1	
Share Price ⁽¹⁾	\$0.19
Shares O/S (Basic)	63.5M
Market Cap (Basic)	\$12.1M
Warrants	20.8M
Options ⁽²⁾	6.2M
Shares O/S (FD)	90.5M
Market Cap (FD)	\$17.2M
Cash ⁽³⁾	\$4.9M



Key Shareholders

- Frank Giustra
- Gord Keep
- Fiore Management
- James Hutton
- Rex Motton



CROSSROADS
GOLD

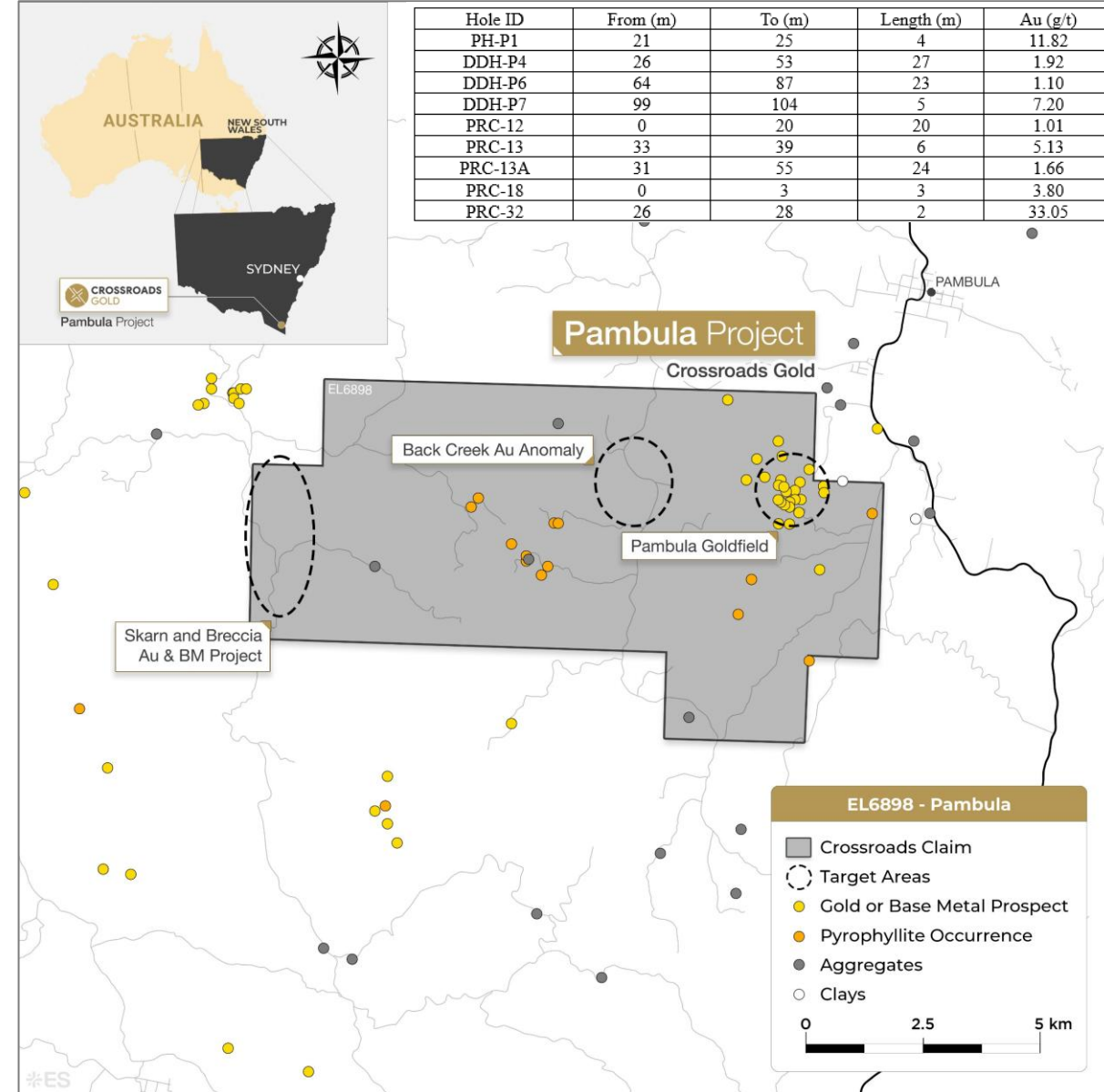
Pambula Gold Project

Historical high-grade producer with a defined 1.5km mineralized corridor. Strong evidence of a large-scale epithermal gold system

Pambula Gold Project Overview

Historical high-grade producer of 45,000 oz gold

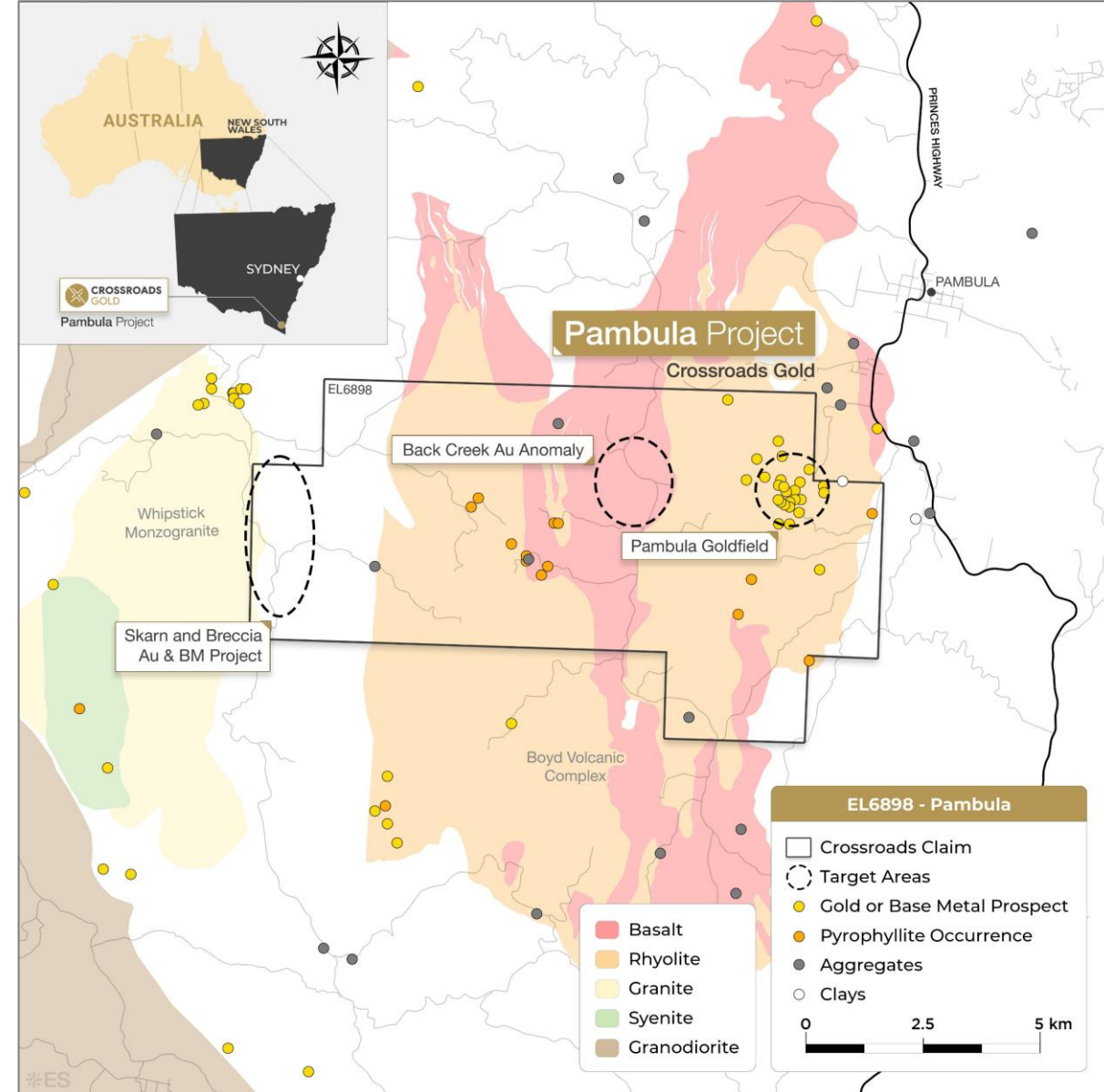
- 100% owned gold project in New South Wales, Australia
- Exploration License (EL) granted in November 2025 and valid for 5 years until November 2030
- Covers the entire historic Pambula goldfield (past-producing district)
- Historical production of ~45,000 oz gold from high-grade zones
- Located within a 320 km long mineralized corridor hosting multiple gold systems
- Strong evidence of a large-scale epithermal gold system
- Multiple high-grade drill intercepts near surface
- Mineralization is open along strike and at depth
- Combination of high-grade veins + bulk-tonnage potential
- Excellent access, infrastructure, and year-round operability



Pambula Exploration Potential

1.4 km mineralized corridor with multiple structures

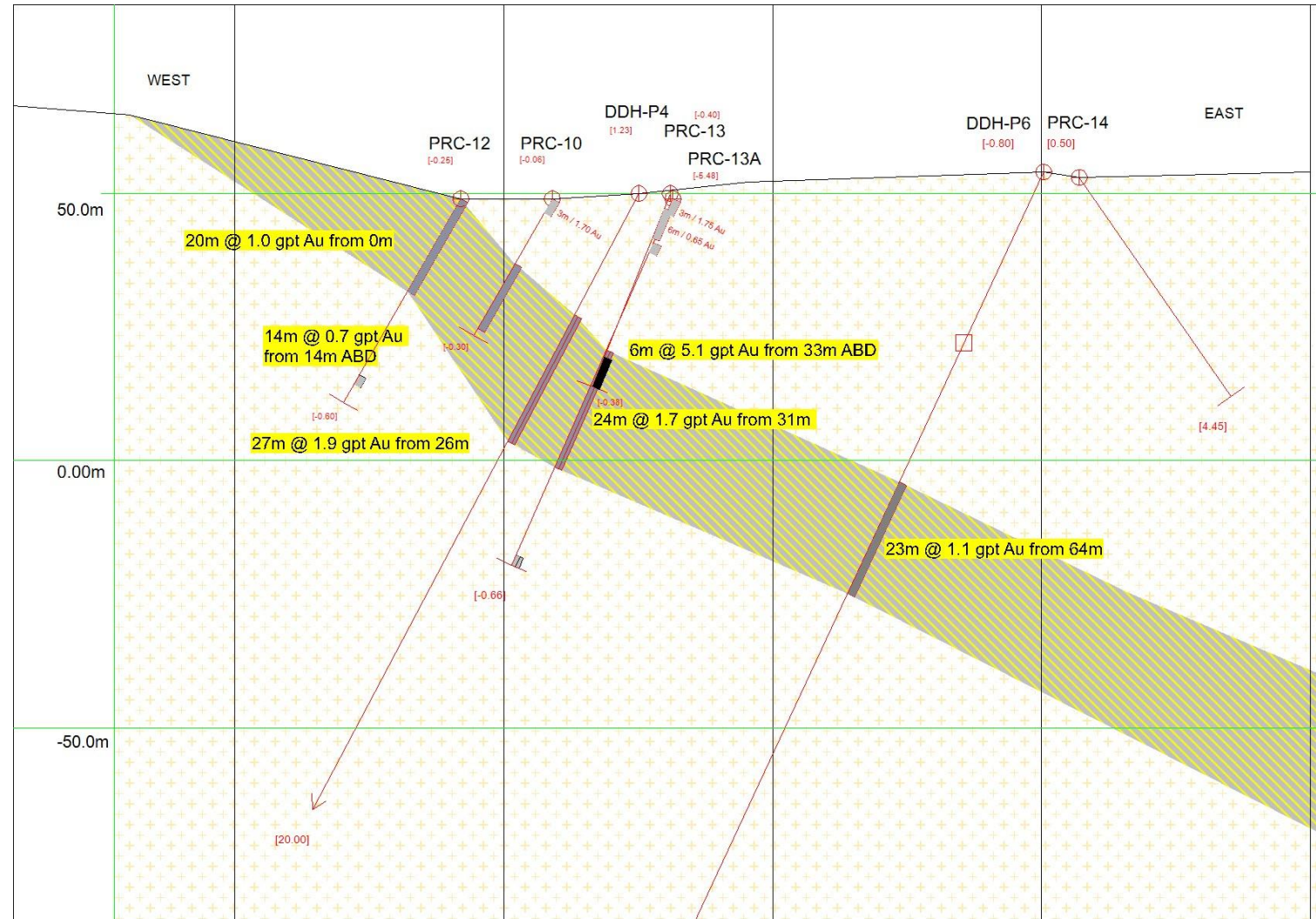
- High-grade drill highlights include:
 - 4m @ 11.8 g/t Au (PH-P1) from 21m depth
 - 5m @ 7.2 g/t Au (DDH-P7) from 99m depth
 - 6m @ 5.13 g/t Au (PRC-13) from 33m depth
 - 2m @ 33.0 g/t Au (PRC-32) from 26m depth
- High-grade zones show strong vertical continuity
- Historical drilling was limited and shallow
- Several targets remain untested or underexplored
- Evidence of fault-controlled and breccia-hosted gold
- Potential for stacked mineralized zones at depth
- Multiple drill-ready targets identified (e.g. Pilot Fissure)
- Clear opportunity for modern exploration to unlock scale



Pambula Exploration Potential

Consistent, shallow high-grade gold mineralization defined across a coherent, east-dipping structure

- **Strong continuity:** Broad, coherent mineralized zone across multiple holes
- **Shallow intercepts:** Up to 27m @ 1.9 g/t Au from 26m (DDH-P4)
- **High-grade zones:** Includes 6m @ 5.1 g/t Au within wider envelope and abandoned in old workings
- **Consistent widths/grades:** Multiple intercepts ~1–2 g/t Au over 20m+
- **Open at depth:** Mineralization extends below current drilling
- **Underexplored:** Sparse, shallow historical drilling leaves potential upside
- **Clear targets:** Down-dip and along-strike with expansion potential





CROSSROADS
GOLD

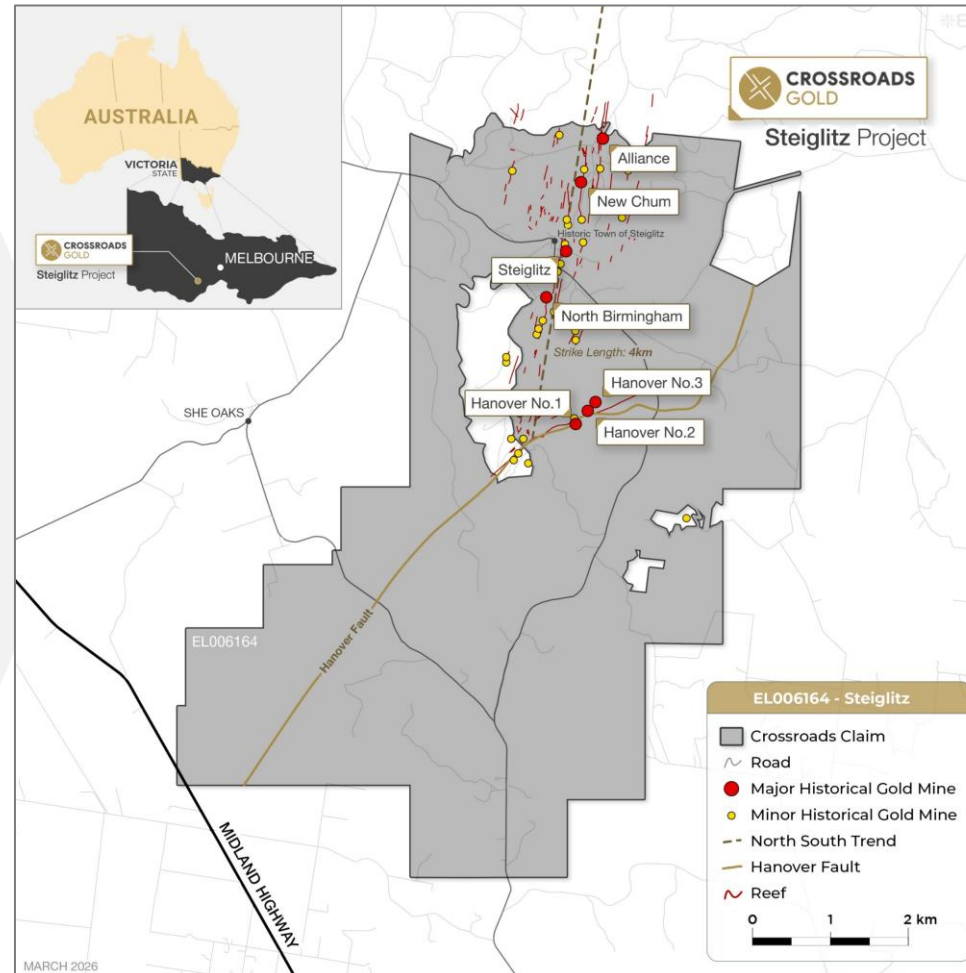
Steiglitz Project

Located in the Bendigo Zone at the Southern
Extension of the Fosterville Sub-Domain

Steiglitz Project Overview

Victoria's 10th largest producer in historical Bendigo Gold Belt with 2nd highest recovered grade of 38 g/t Au

- 100%-owned 51km² land package located ~80km west of Melbourne near the town of Meredith (10km) at <300m elevation
- Exploration License (EL) granted
- Year-round project access with extensive nearby infrastructure
- One of the first hard rock Australian goldfields discovered in 1855. Produced ~250k oz Au with avg. recovered grade of 38 g/t⁽¹⁾ (ceased in 1911)
- Located within prolific Bendigo Zone of the Lachlan Fold Belt
- Key feature: located along the Fosterville Trend and hosts gold-arsenic-antimony signature mineralization



New Mariners Mine
(Source: Gov. Geologist, 1890)



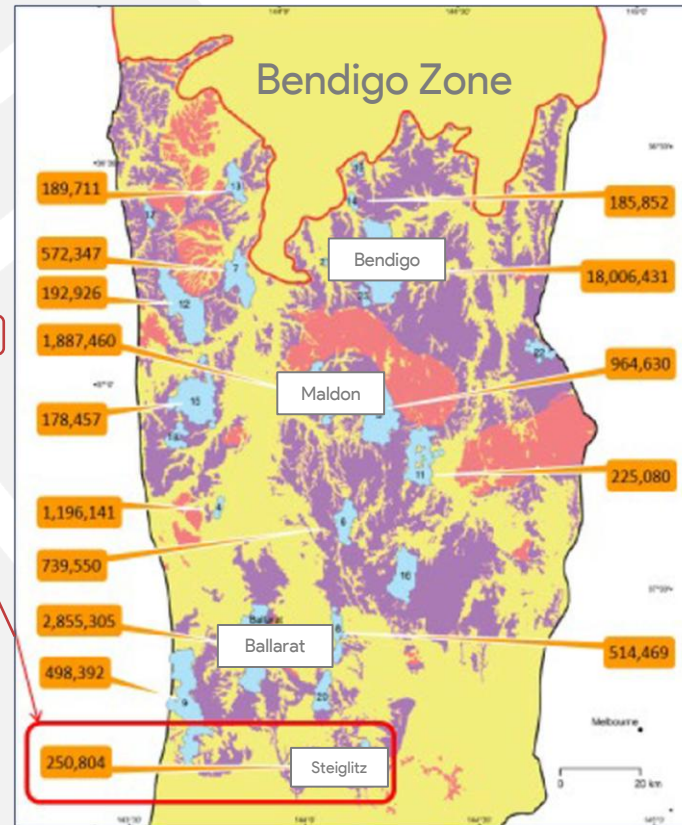
Fig. 13. New Mariners Mine, 1880. Mrs. Moore. St. Arnaud.
New Mariners Gold Mine, Steiglitz, 1880

Steiglitz: Historical Producer in Bendigo Zone

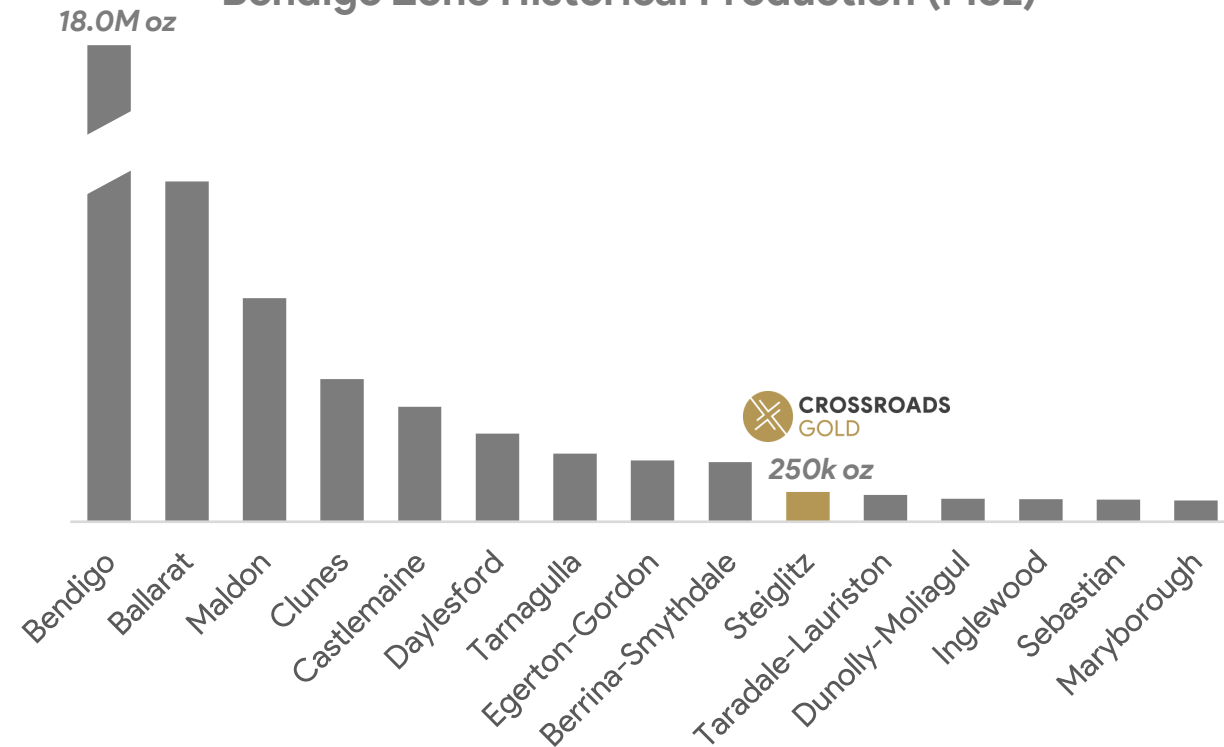
Steiglitz produced ~250,000 oz (#10 producer) in the historical Bendigo Gold Belt and had 2nd highest average recovered grade of 38 g/t Au ⁽¹⁾

Top Producers

Rank	Name	M oz
1	Bendigo	18.0
2	Ballarat	2.9
3	Maldon	1.9
4	Clunes	1.2
5	Castlemaine	1.0
6	Daylesford	0.7
7	Tarnagulla	0.6
8	Egerton-Gordon	0.5
9	Berrina-Smythdale	0.5
10	Steiglitz	0.25
11	Taradale-Lauriston	0.2
12	Dunolly-Moliagul	0.2
13	Inglewood	0.2
14	Sebastian	0.2
15	Maryborough	0.2



Bendigo Zone Historical Production (Moz)

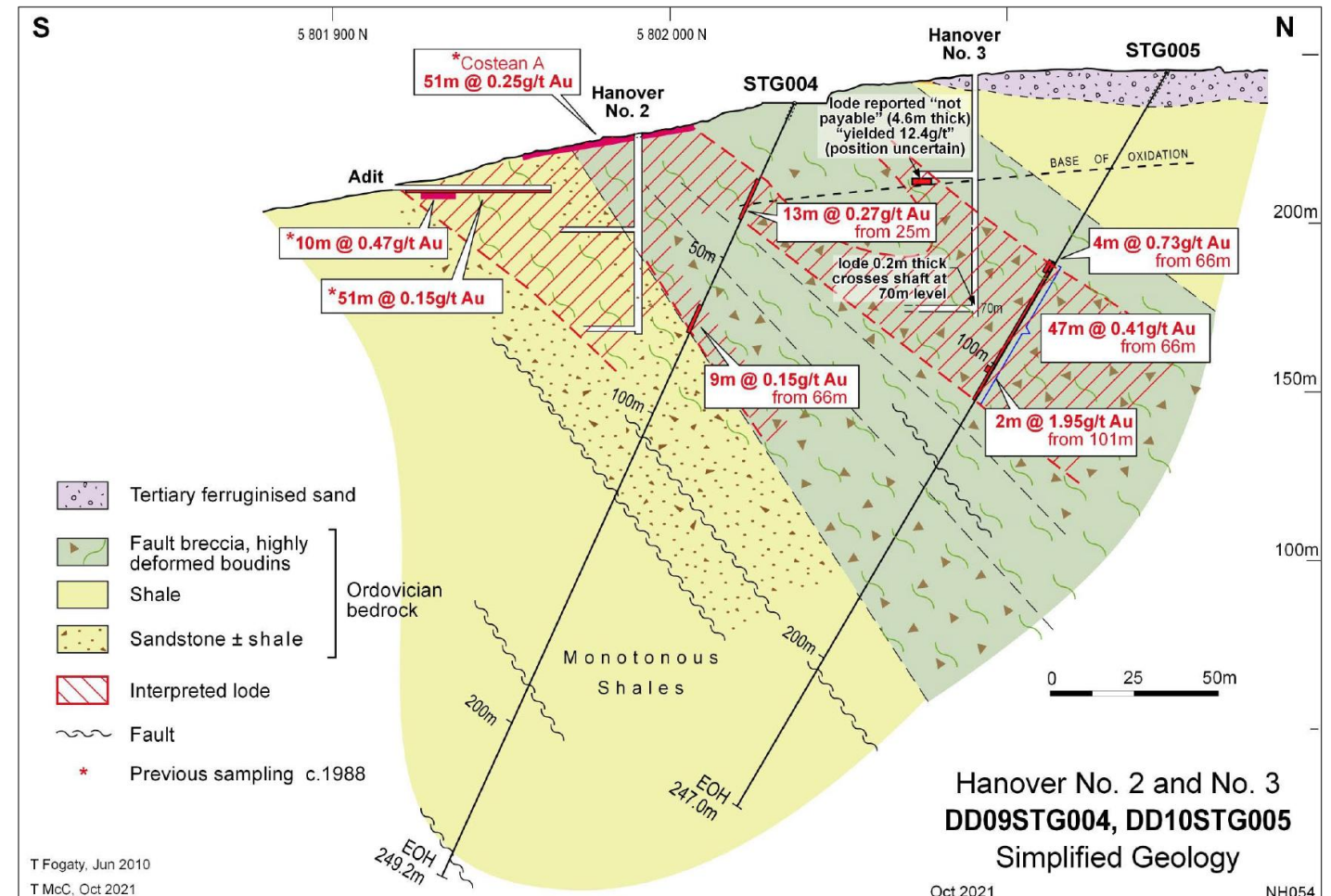


Geology Plan & Gold Exploration Targeting

Priority target zones are the N-S trending high-grade Steiglitz vein zone & the large-scale Hanover Fault

- Previous exploration focused on Hanover Fault which included geochemistry, IP traverses, geological mapping, 3 RC and 2 diamond drillholes. Best intercept 47m at 0.41 g/t Au in STG005 from 56m
- Goldfield consists of tightly folded upright N-S striking Ordovician sediments with west dipping reverse faults hosting auriferous high-grade quartz veins. Hanover Fault truncates or offsets goldfield in the south
- Two high priority targets in the goldfield:
 - 1) N-NNE striking parallel high-grade quartz reefs (main gold producers of the field). Most of the major producers lie on the same fault zone
 - 2) NE-trending Hanover Fault with widespread sheared quartz stockwork style mineralisation
- Intersection of these two structural domains is where historical mining has taken place (Hanover mines). New data supports the view that these mines are located on discrete flexures within the Hanover Fault where rotation of the dominant ENE trend has taken place

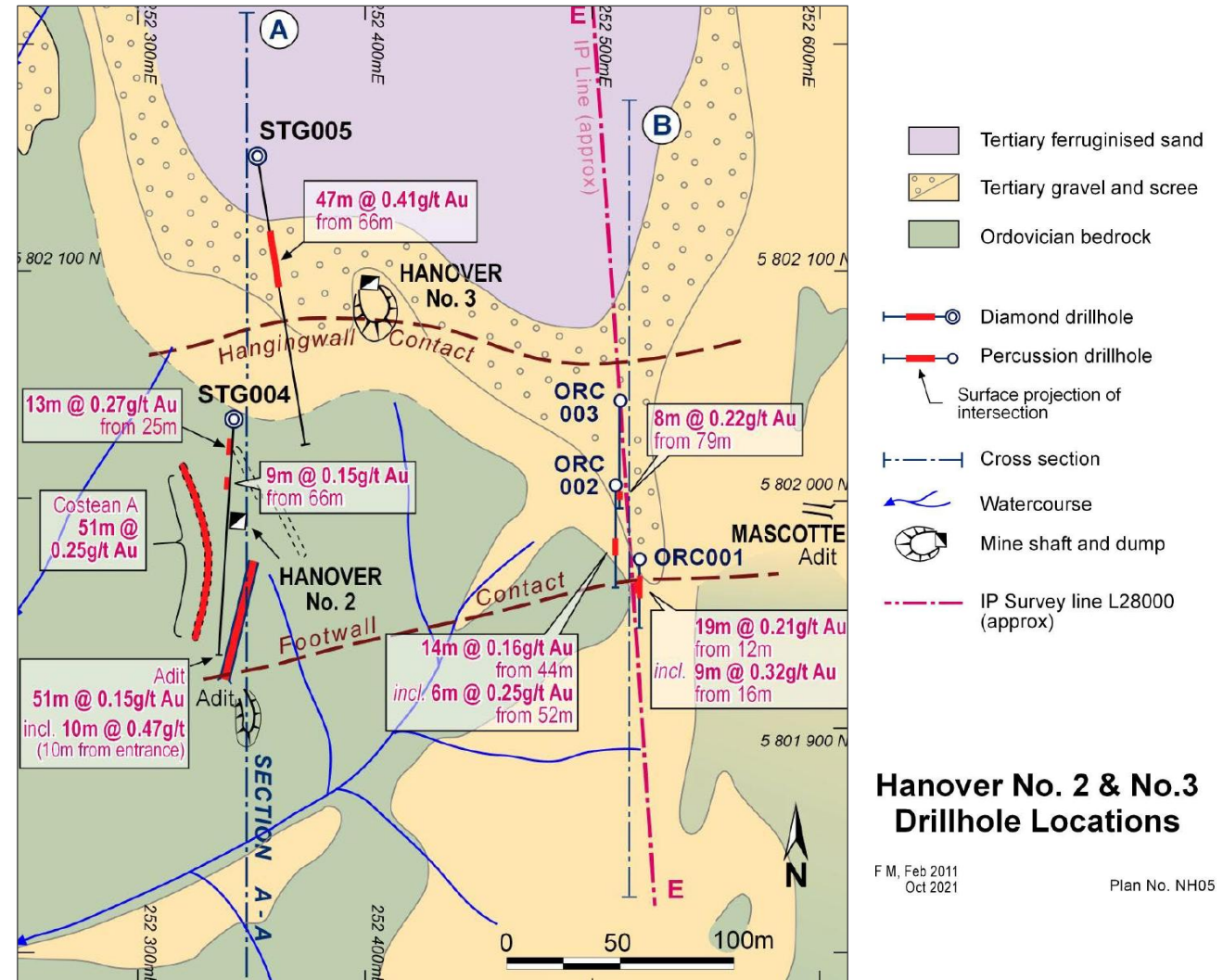
Cross Section of Diamond Drilling



Steiglitz – Hanover Previous Drilling Plan

Limited modern exploration at Steiglitz with only 5 drill holes

- Drilling at Hanover prospect consisted of 3 RC percussion holes (ORC) and 2 diamond holes (STG) in 2 traverses
- Wide zones of anomalous and low-grade mineralization were intersected with the best intercept of 47m at 0.41 g/t Au from 56m depth
- A strong correlation of Au-As-Sb is present within the drilling
- Further sampling and mapping are planned to realize the significance of this large mineralized structure



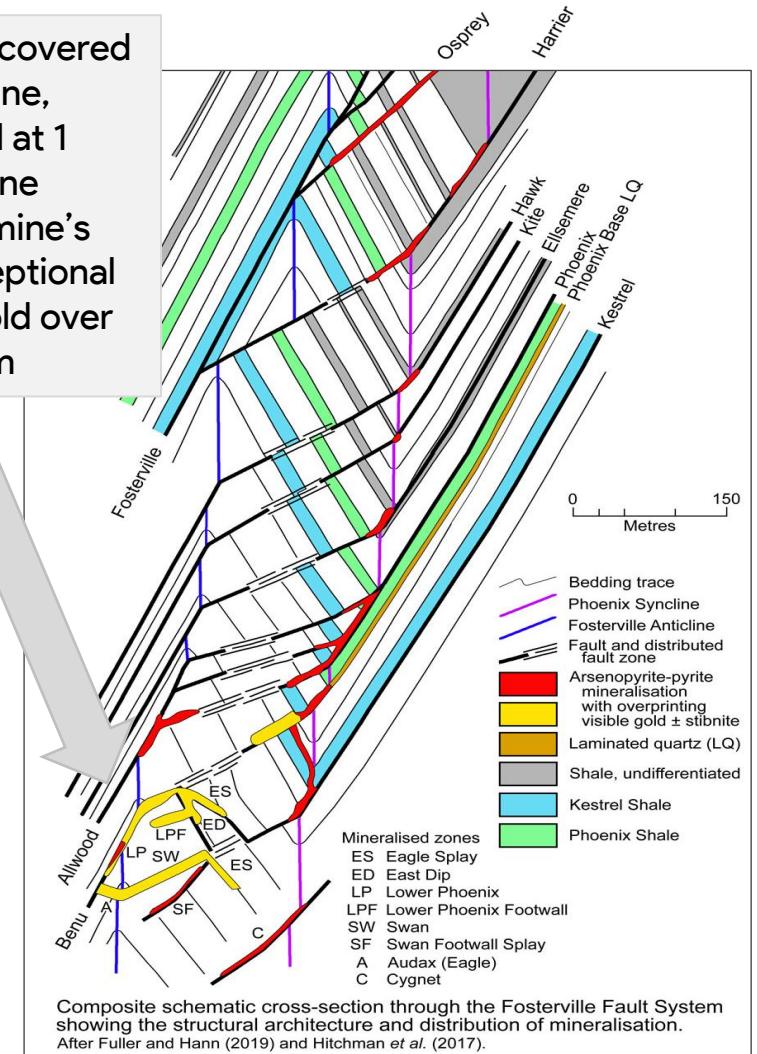
Steiglitz: Many Fosterville Features

Comparison with Agnico-Eagle's Fosterville Gold Mine

- **Fosterville-style system:** Gold–antimony mineralization fits a proven epizonal model, where later shallow gold–antimony overprints earlier deeper mesozonal gold, analogous to Fosterville
- **Strategic regional position:** Located on the western margin of the Selwyn Block, a key structural corridor hosting the Lockington, Fosterville, and Lauriston goldfields
- **Favourable mineralogy:** Gold is closely associated with sulphides, including pyrite, arsenopyrite, and antimony minerals (stibnite, tetrahedrite, bournonite), plus native gold
- **Strong structural controls:** Mineralization is hosted in tightly folded Ordovician sediments with west-dipping thrust faults; gold concentrates in dilational zones created where faults cut across fold crests and troughs
- **High repetition potential:** Multiple stacked, plunging ore shoots are likely due to parallel quartz vein sets intersecting repeated anticline–syncline dilational zones

Composite Schematic Cross Section through Fosterville Fault System

Fosterville's Swan Zone (discovered in 2016) transformed the mine, which contained 2M oz gold at 1 oz/t (~30 g/t). The Swan Zone significantly increased the mine's overall grade. Included exceptional grades, including 991 g/t gold over 8.85m at 422 g/t over 7.30m

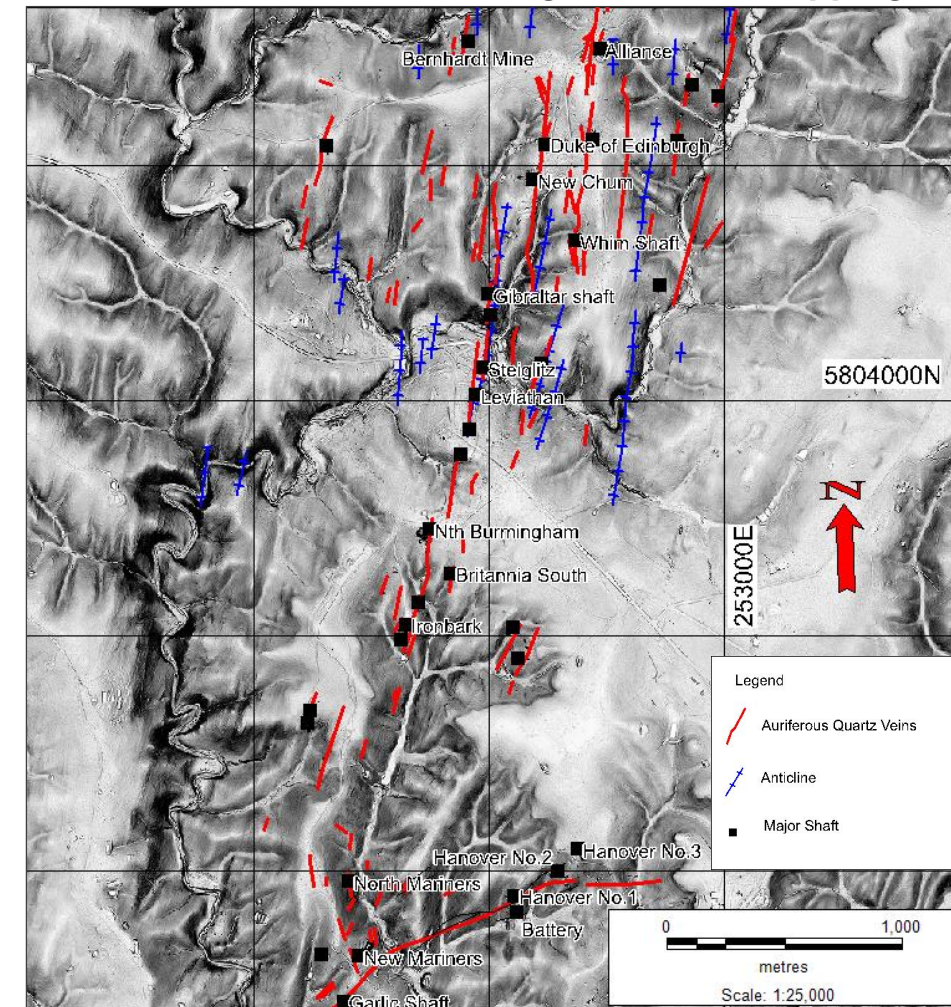


Steiglitz Goldfield – Key Goldfield Features

Goldfield features and LIDAR spatial analysis

- **High-Grade Precedent:** Past high-grade gold past production (250k oz @ 38 g/t Au - 1855-1911) determines the potential for other significant high-grade gold deposits to be discovered especially below old workings
- **Shallow Previous Mining:** Deepest mine was North Birmingham at 233m. A few mines reached ~140m depth, while the avg. recorded mine depth was 70m. Suggests relatively low exploration costs to drill the major structures
- **Structural Fluid Focus:** Majority of the high-grade significant gold producing historical mines at Steiglitz lie along one main anticline-associated fault structure for a length of 4km. Generally, rich quartz veins formed along west dipping thrust faults. There are a series of parallel faults-quartz veined zones east and west of this main structure which have also been gold producers. Fold wavelength is ~100m. This central structure is a key drilling target which will be the priority of exploration groundwork

LIDAR with historical mining features & mapping



Source: New Hanover Exploration Pty.

Access at Steiglitz

Year-round project access possibility at Steiglitz

- Year-round access providing management complies with fire restrictions and erosion/water control
- The town has several historic buildings and a population of 61
- Community relations are important in working in and around even such a small population of local inhabitants



Hanover area abandoned mine



Hanover style quartz veining



Potential drill sites

Steiglitz Exploration Plan

Fully funded to complete Phase 1 exploration program

Q2 2026



- Initial stream sediment geochemistry program assaying a multi-element suite including gold
- Initiate landowner access, community relations and ERR access to all Crown Land
- Traverse based soil & rock chip sampling geochemistry of the main goldfield & anomalous drainages discovered in the stream sediment survey
- Landowner agreements and drilling permits followed by initial scout drilling of various available targets to 100m depth

Q3 2026



- Ongoing detailed and infill geochemical sampling
- Ongoing community engagement and Crown Land permitting
- Detailed structural mapping of the central goldfield
- Follow up reconnaissance drilling of the various high priority targets ensuring access where possible
- Structural interpretation of results followed by permitting for further diamond and percussion drilling
- Priority evaluation, drill testing of possible target extensions and new targets generated by ongoing district scale fieldwork to depths of 200m

Q4 2026



- Ongoing community relations engagement
- Comprehensive detailed type drilling of the significant target discoveries for structural and grade controlling features
- Target deeper drilling on any major discoveries to 400m depending on accessible and available sites

Q1 2027



- Continue to target the larger and higher-grade targets based upon drill results and interpreted structural models for increasing resources within the project
- Annual review and project evaluation in comparison with other company projects
- Design a new program and budget for the coming year



CROSSROADS
GOLD

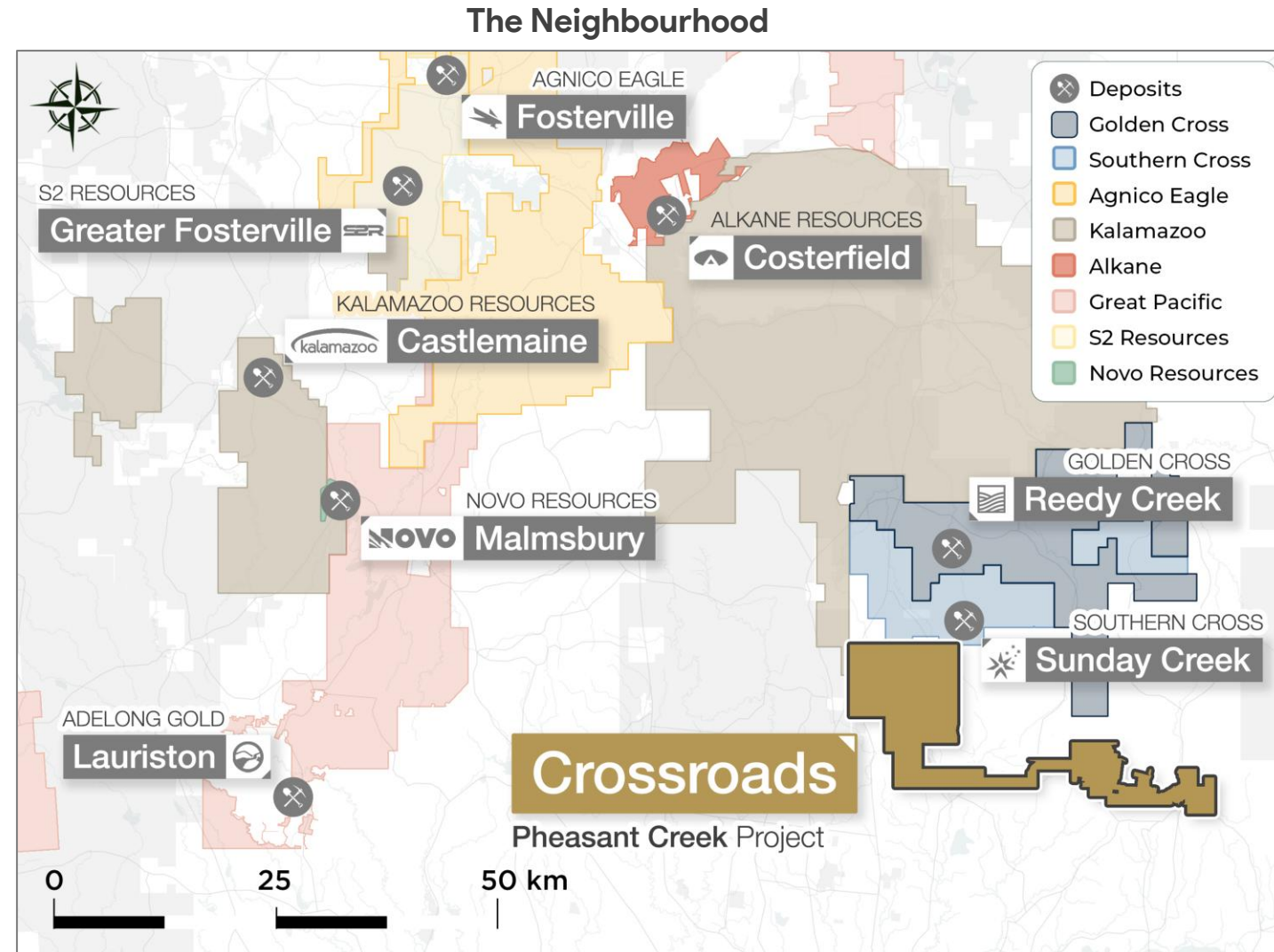
Pheasant Creek Project

Auriferous Quartz Veined Dykes Similar to Nearby Sunday Creek

Pheasant Creek Project Overview

Adjacent to Sunday Creek, one of the world's best epizonal discoveries

- Located ~60km north of Melbourne, Australia
- Directly adjacent to Southern Cross' Sunday Creek Project, only 4km from the deposit
- Occurs within the Melbourne Zone of the Tasman Fold Belt
- Gold mineralization occurs as epizonal fault-controlled quartz veins sometimes associated with earlier dioritic dykes as at Pheasant Creek (analogous to Sunday Creek)
- 6km of under explored auriferous dykes mined in the 1890s
- Strong pathfinder anomalism (Au-As-Sb)
- Easy, year-round project access
- Fully funded exploration program to commence in H1 2026



Neighbour to Southern Cross Gold

Sunday Creek only 4km from Pheasant Creek Project

- Southern Cross (TSX: SXGC, ASX: SX2) Market Cap: \$2.8bn⁽¹⁾
- Shallow orogenic (or epizonal) Fosterville-style deposit located 60km north of Melbourne
- Large and growing antimony deposit (defense/critical mineral)
- 243 drill holes totaling 113,000m⁽²⁾, with 79 intersections at 100+ AuEq g/t x metres, 66 individual intersections >50 to 100 AuEq g/t x metres width (globally leading hit rates)
- Potential upside with only 10% of the trend tested. Previous drilling to an area of only 100m width, 800m length, but only 80m depth – showing open along strike and at depth

Sunday Creek Exploration Target

Range	Tonnes (Mt)	AuEq g/t*	Au g/t	Sb%	Au Eq* (Moz)	Au (Moz)	Sb (kt)
Lower Case	8.1	8.3	6.4	0.8	2.2	1.7	66.6
Upper Case	9.6	10.6	8.3	0.9	3.2	2.6	88.2



Select Drill Results (Top 10)

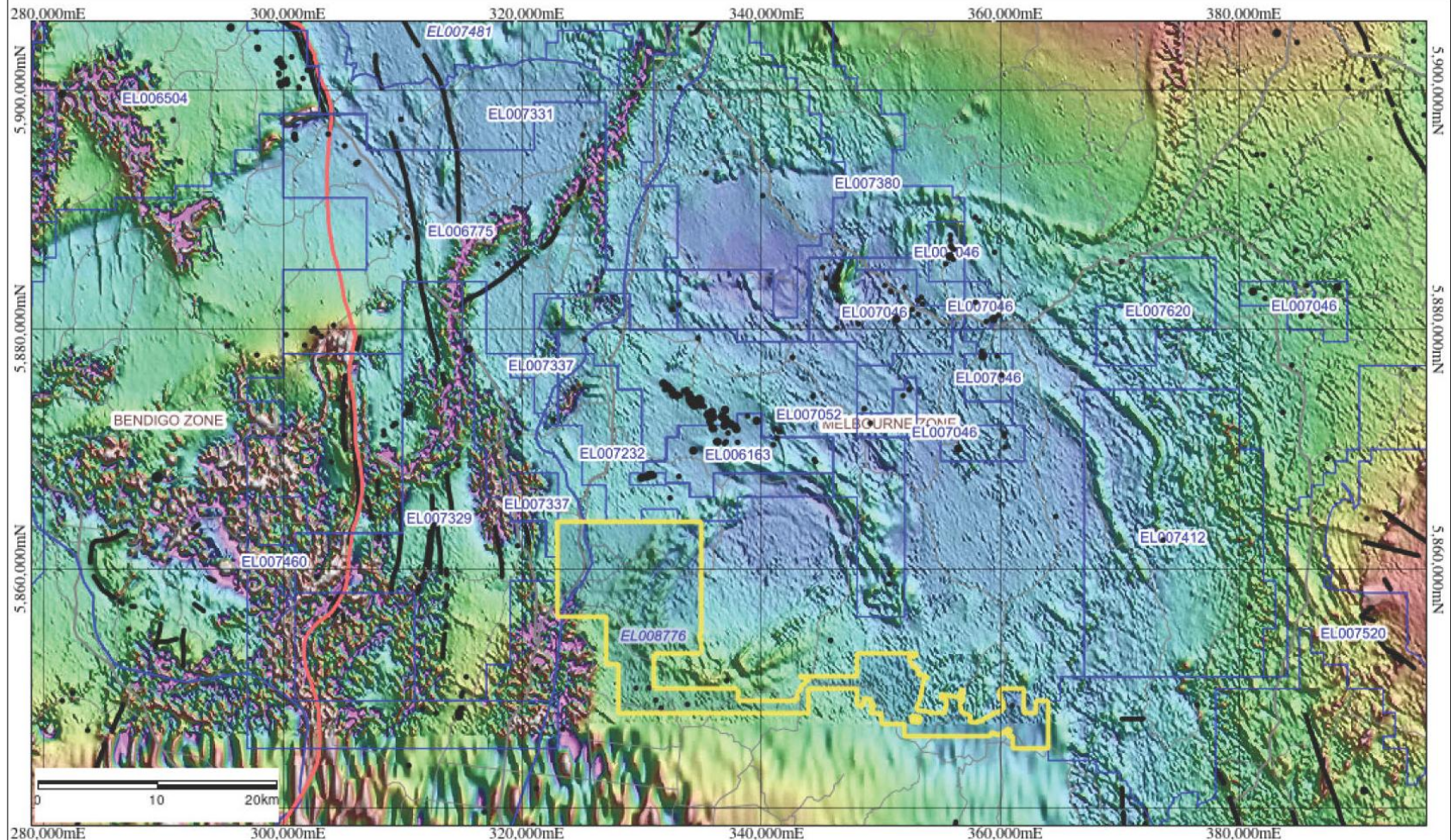
Rank	Hole-ID	From (m)	To (m)	Length (m)	Au (g/t)	Sb (%)	AuEq (g/t)	AuEq (g/t)*m
1	SDDSC107	684.3	685.3	1.0	2,318.4	0.3	2,318.9	2,319
2	SDDSC077B	737.1	740.7	3.6	391.9	0.8	393.4	1,416
3	SDDSC091	430.0	450.0	20.0	62.7	0.5	63.7	1,274
4	SDDSC145	876.4	876.9	0.50	2,541.9	1.1	2,544	1,272
5	SDDSC092	681.6	684.9	3.3	267.8	1.8	271.1	895
6	SDDSC082	417.4	419.0	1.6	500.3	0.1	500.5	801
7	SDDSC144	776.6	776.8	0.2	3,330.0	11.7	3,352.0	670
8	SDDSC137W2	208.2	209.9	1.7	296.2	1.7	299.4	509
9	SDDSC118	1,120.4	1,124.0	3.6	124.8	0.0	124.8	449
10	SDDSC082	413.6	415.3	1.7	230.6	9.9	249.1	424

Source: Southern Cross Gold public disclosure, QuoteMedia. Trading chart from Feb 24, 2023 to Feb 24, 2026.

Pheasant Creek Magnetic Geophysics

Department of Energy,
Environment and Climate Action

Magnetics and Regional Structures



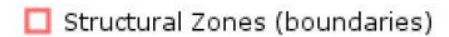
Mines and Mineral Occurrences

- MAJOR
- INTERMEDIATE
- MINOR
- UNKNOWN

Current Mineral Exploration Licences



Structural Zones (boundaries)



Geological Lines & Faults 1M



Railways - 500K

raster

■ Polygon

— Line

■ Point

Roads (500K)

— Major Roads

— Other Roads

victoria_2004feb24_air_mag_50m_vg94.ecw



Disclaimer: This map is a snapshot generated from Victoria Government data. This material may be of assistance to you but the State of Victoria does not guarantee that the publication is without flaw of any kind or is wholly appropriate for your particular purposes and therefore disclaims all liability for error, loss or damage which may arise from reliance upon it. All persons accessing this information should make appropriate enquiries to assess the currency of the data.

Generated from GeoVic3

Map Created Sat Aug 16 2025 09:32:13 GMT+1000 (AEST)

Map Scale: 1:428,508

Projection: MGA94 55

The map contains zonal grid lines that extends beyond their zone boundary.



Source: Victorian State Government. (2025).

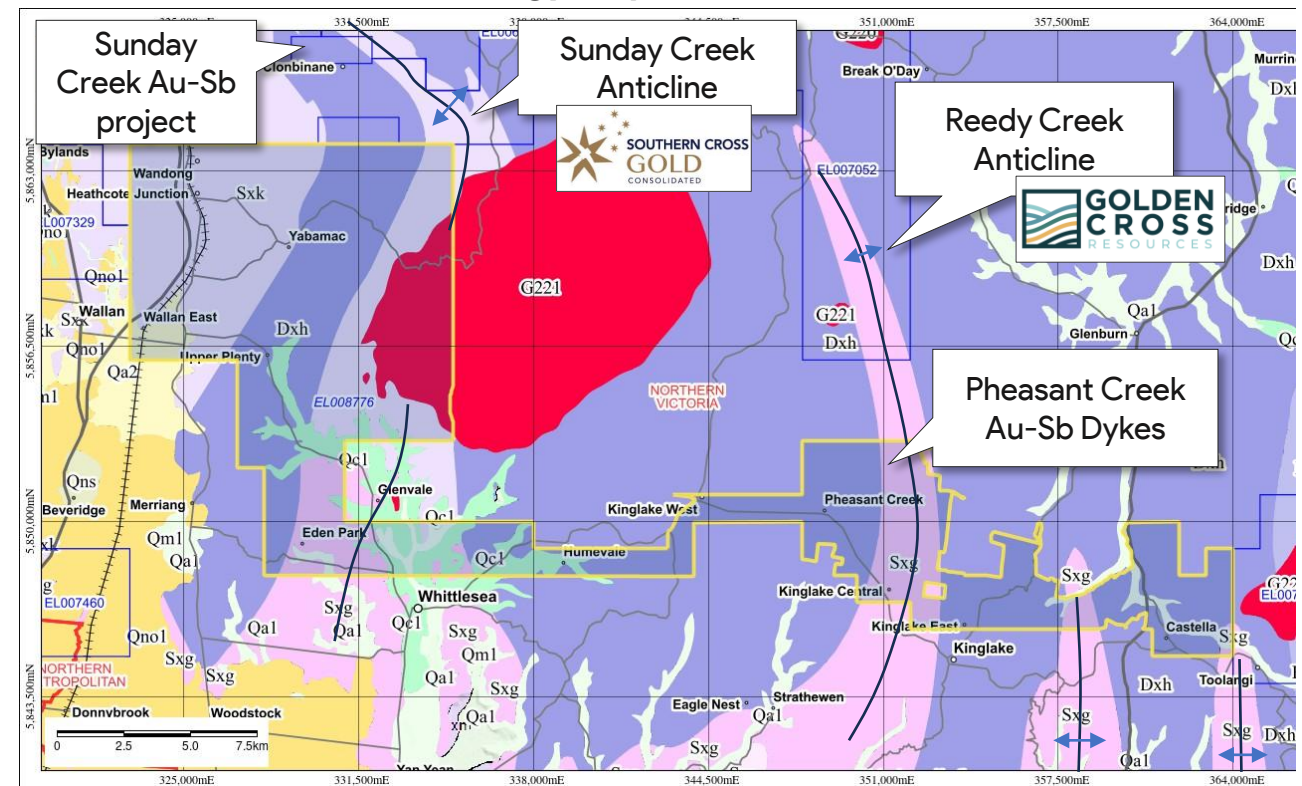
Pheasant Creek District Geology

Sedimentary flysch type terrain with epizonal gold – antimony mineralization

- The Siluro-Devonian sediments are generally composed of thin bedded siltstone, sandstone and mudstone.
- East west compression has caused a series of curvilinear anticlinal and synclinal upright folds that are often breached by gold mineralizing sub-parallel thrust faults.
- Regional metamorphism is sub-greenschist facies apart from the contact metamorphism caused by the granitic intrusions.

Map Code	Unit Name	Rank	Age	Environment	Lithology
Qa1 & Qc	Unnamed alluvium	Formation	Quaternary (Holocene)	Sedimentary (Non-Marine (Alluvial))	Fluvial: alluvium
Qno1	Unnamed sheetflow basalt	Formation	Quaternary (Pleistocene)	Igneous (Extrusive)	Basalt, minor scoria: tholeiitic to alkaline
Dxh	Humevale Siltstone	Formation	Devonian (Early Devonian)	Sedimentary (Marine)	Siltstone, minor sandstone
Dug221	Mount Disappointment Granodiorite	Intrusion	Devonian (Mid-Late Devonian)	Igneous Intrusion (Granite I-type)	granite, granodiorite, diorite
Sxg / Sud / Suk	Dargile & Kilmore Formations	Formation	Silurian (Pridoli)	Sedimentary (Marine)	Siltstone, thin-bedded sandstone

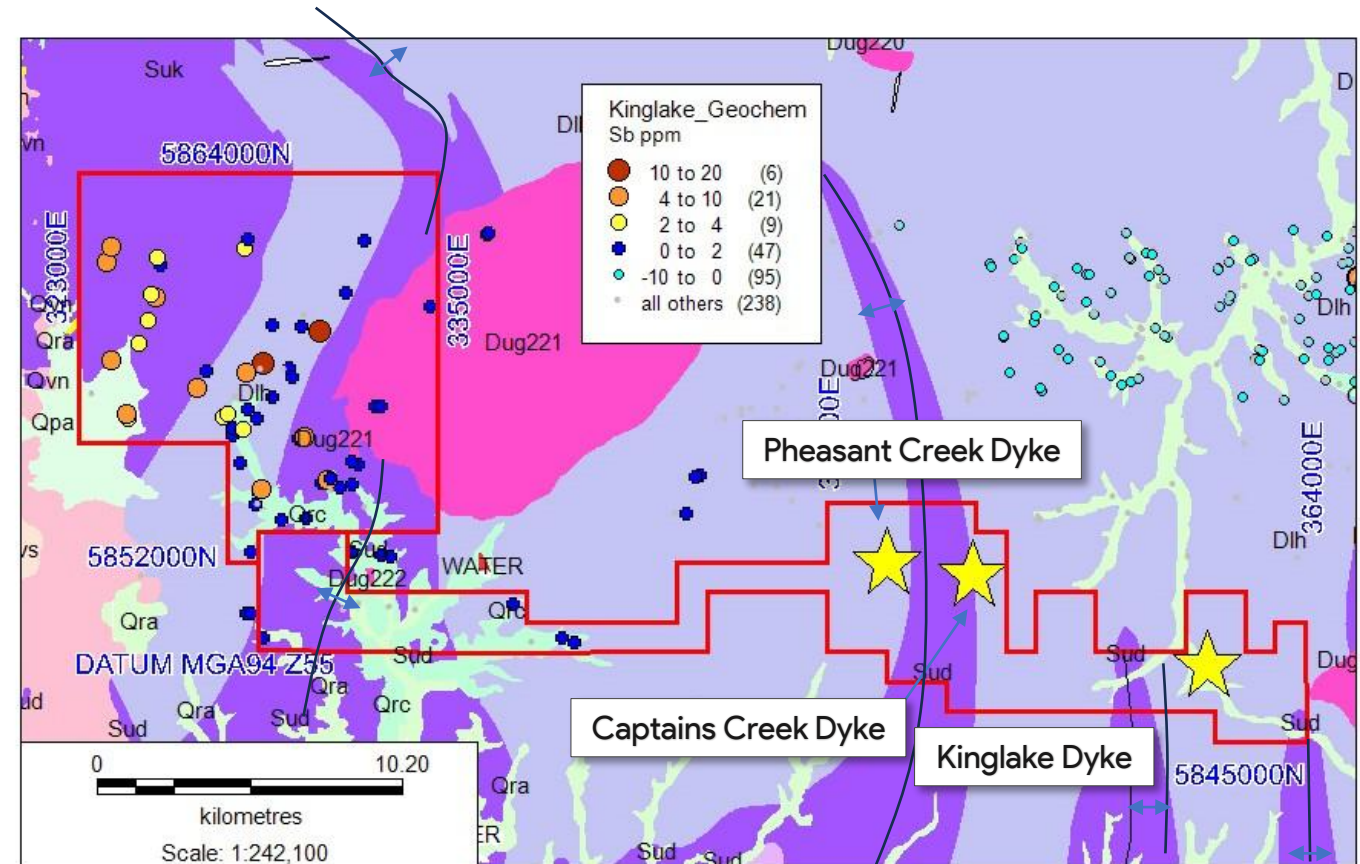
Geology map of Pheasant Creek Area



Antimony Sediment Geochemistry

Widespread antimony mineralization in sediments requiring a similar gold survey

- Gold mineralization occurs as epizonal fault-controlled quartz veins sometimes associated with earlier dioritic dykes as at Pheasant Creek and nearby Sunday Creek
- Anticlinal fold systems are also regarded as being strongly beneficial for focusing hydrothermal gold mineralization as at the Costerfield Au-Sb mine (~55km to NW)
- Antimony anomalism in west tenement area where NE and N trends in data occur. Very few antimony samples assayed for gold
- Stream sediment sampling required for entire 233km² tenement with low level gold and multielement analysis to be carried out



Pheasant Creek Exploration Plan

Fully funded to complete Phase 1 exploration program

Q2 2026



- Stream sediment geochemistry program assaying gold & multi-element suite
- Initiate landowner access & community relations
- Traverse-based soil & rock chip sampling geochemistry of the dyke prospects & anomalous drainages discovered in the stream sediment survey
- Landowner agreements and drilling permits
- Initial scout drilling of high-priority targets to 100m depth

Q3 2026



- Ongoing detailed and infill geochemical sampling & mapping
- Ongoing community relations engagement and property access agreements
- Follow up reconnaissance drilling of high priority targets
- Structural interpretation of results followed by permitting for further diamond and percussion drilling
- Priority evaluation & drill testing of target extensions, new targets generated by ongoing district scale fieldwork to 200m depths

Q4 2026



- Ongoing community relations engagement, mapping, sampling
- Comprehensive detailed type drilling of the significant target
- Target deeper drilling on any major discoveries to 400m

Q1 2027



- Continue to target the larger and higher-grade targets based upon drill results and interpreted structural models for increasing resources within the project
- Annual review and project evaluation in comparison with other company projects
- Design a new program and budget for the coming year



CROSSROADS
GOLD

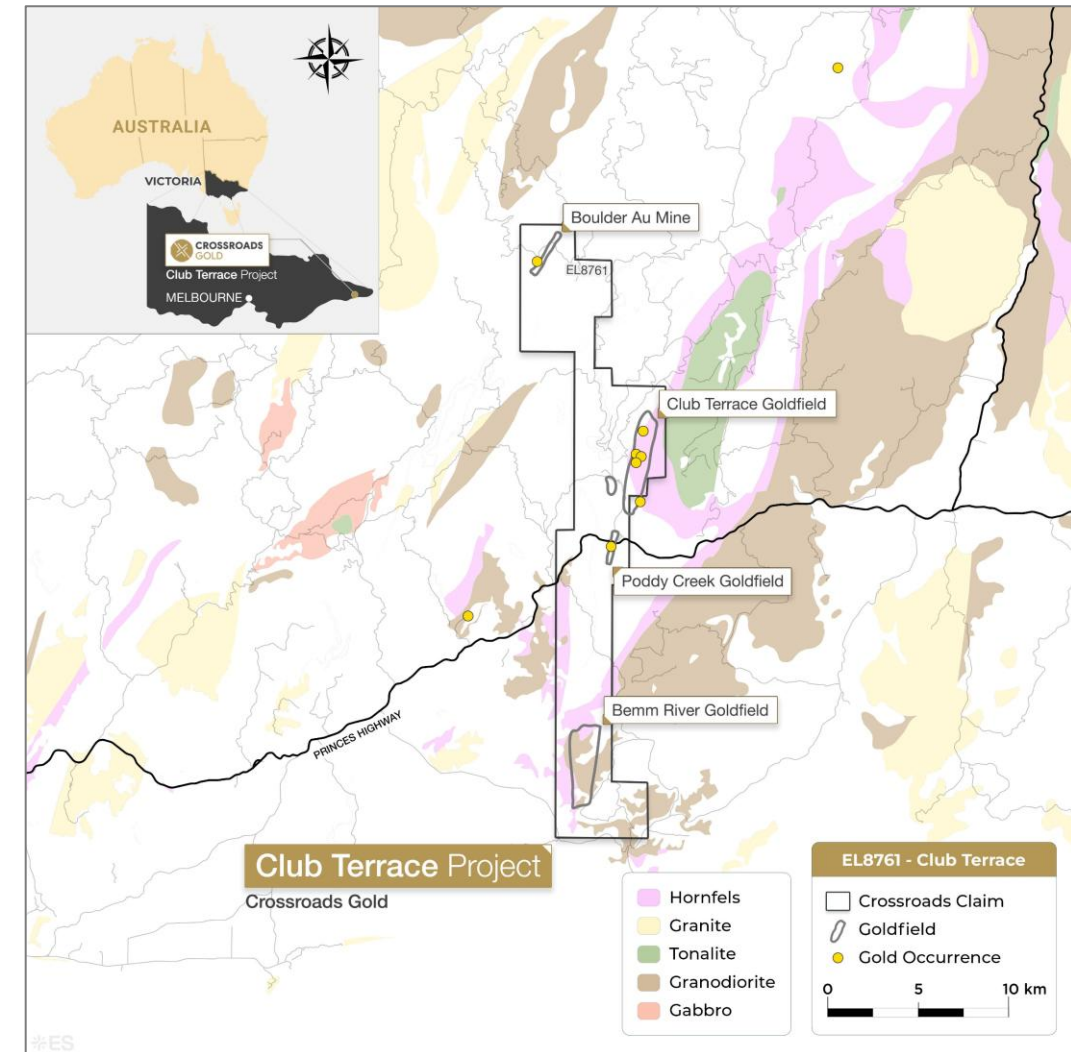
Club Terrace Project

History of episodic alluvial and hard rock gold mining
dating back to the late 19th century

Club Terrace Project Overview

Excellent potential for new gold discoveries in underexplored terrain with no modern gold drilling to date

- Large-scale land position in Victoria, Australia (East Gippsland)
- Covers 126 km² across a 30+ km gold trend - District-scale opportunity with multiple gold occurrences
- Located along major regional structures: (i) Bemm Fault, (ii) Club Terrace Fault
- Situated in a proven historic gold mining district with historical mining dating back to the late 1800s
- Strong geological similarities to other Lachlan Fold Belt deposits (190M+ oz of gold endowment)
- Very limited historical exploration despite strong indicators – opportunity to apply modern exploration techniques for the first time
- Greenfields discovery opportunity with a large continuous structural corridor ideal for a potential major system discovery
- Clear path to generate high-impact drill targets quickly



Contact Us

TSXV:CRG

OTCQB:CRGCF

FSE: FI1

Head Office

Suite 3123 – 595 Burrard Street
PO Box 49139, Three Bentall Centre
Vancouver, BC V7X 1J1
investors@crossroadsgold.com

T: 778 949 2699

www.crossroadsgold.com





Victoria State – A Robust Mining History



Globally Recognized Tier 1 Jurisdiction

- Australia: Consistently ranked a top jurisdiction worldwide for investment⁽¹⁾
- Australia is home to world class deposits: Fosterville (Agnico), Boddington, Cadia & Tanami (Newmont), Tropicana (AngloGold) and Kalgoorlie (Normandy / Homestake)



Robust Mining-Driven Economy

- Mining contributes ~14% to Australia's GDP and \$400bn+⁽²⁾ in annual export
- Deep pool of mining talent, service providers, drill contractors, geologists and assay labs = short timelines from planning to execution



Victoria: A Modern Gold Revival

- Victoria's "Golden Triangle" is one of the highest-grade gold districts globally (Fosterville 30 g/t Au zones)
- Numerous underexplored structural corridors with new discoveries in Bendigo-Ballarat zone (Southern Cross)



Victoria: Top Gold Producing State

- Victoria: Produced more gold than any state⁽³⁾ totaling 80M+ oz historically⁽⁴⁾
- Home to Agnico's Fosterville Mine (one of the highest-grade and lowest cost gold mines in the last decade), producing 4.4M oz to date (2024YE)



High Geological Prospectivity

- Geology dominated by the Bendigo and Melbourne Zone
- Structural corridors w/ proven potential for 1M+ oz deposits. Dominated by high-grade orogenic (quartz vein systems)



Premier Infrastructure

- Excellent access to Melbourne International Airport, highways, workforce, logistics and mining service hubs. Established land access frameworks. Year-round exploration with mild climate



Supportive Mining Governance

- Clear permitting paths for mineral titles and environmental baseline work. Favorable fiscal terms (only 2.75% state royalty on gold production)



Safe-Low Risk Environment

- Low political and sovereign risk with clear, stable rule of law, transparent regulatory framework, supportive government policy for mining
- High ESG standards, community engagement and indigenous participation processes

Timeline of Gold Mining in Victoria

Fosterville revival in 2006 and Sunday Creek revival in 2022 have resurrected Victoria State



Gold first discovered



Hard Rock Era



The Decline



Modern Revival



Fosterville Re-Rating



Agnico acquires Fosterville



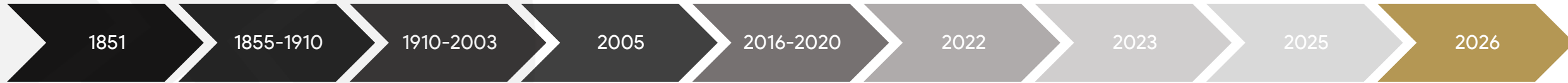
Sunday Creek Gold Rush



GPAC Divestments



Emergence of Crossroads

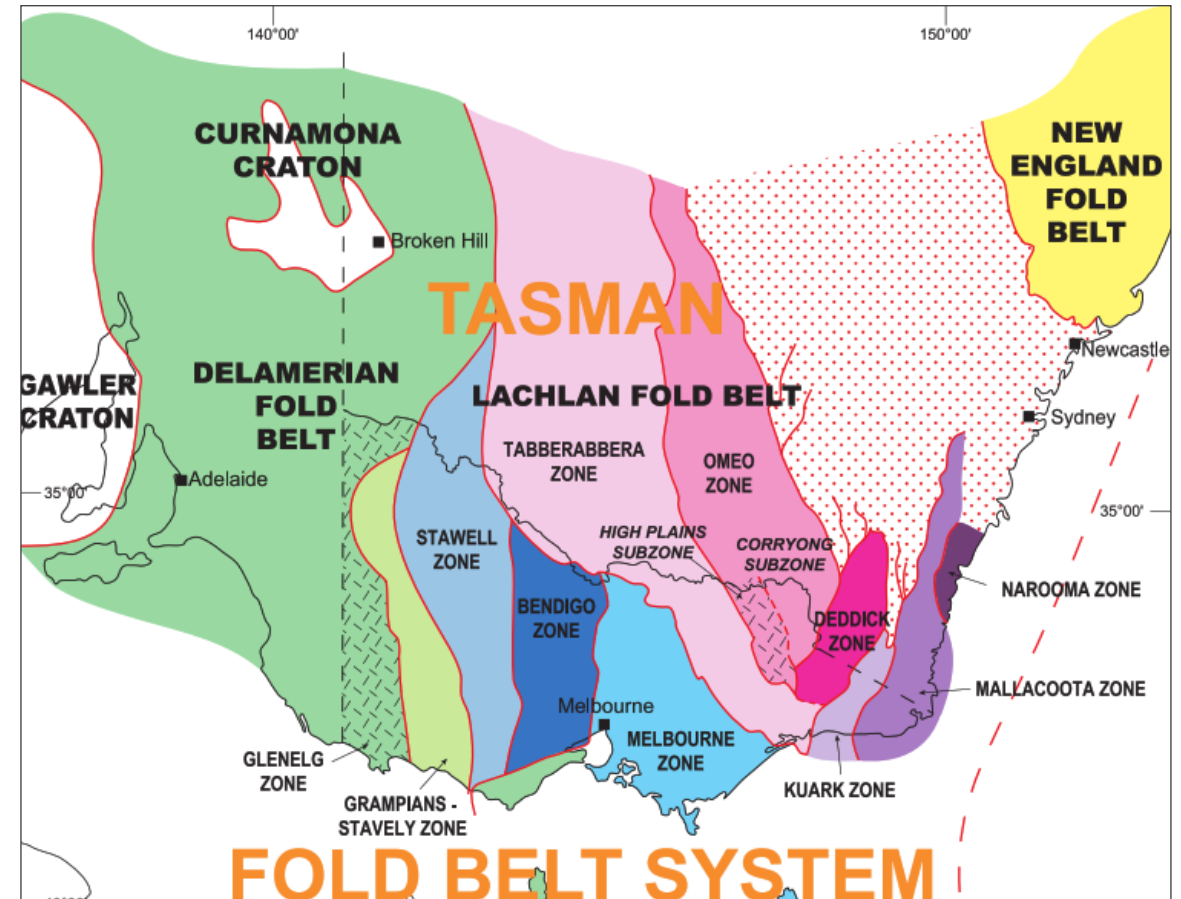


- 1851**
 - Beginning of Victorian Gold Rush
 - Population of Melbourne doubles in 10 years
- 1855-1910**
 - Bendigo, Ballarat start production
 - >60M oz produced during this period
 - Steiglitz produces 250k oz gold
 - Fosterville mined 1894-1903
- 1910-2003**
 - Shallow mining slowly exhausted
 - Limited modern exploration
 - Fosterville mined 1989 to 2003
- 2005**
 - Fosterville restarts commercial production (open-pit sulphides), with UG mining starting in 2006
- 2016-2020**
 - Swan Zone discovery with grades >30 g/t
 - Kirkland Lake valuation explodes
 - Fosterville produces >500,000 oz Au/year
- 2022**
 - Agnico-Eagle completes acquisition of Kirkland Lake Gold as a merger-of-equals (pro-forma market cap of US\$22.4bn)
- 2023**
 - Southern Cross pulls >100g/t Au intersections
 - Market cap balloons, stock up 10x
- 2025**
 - GPAC divests Australian assets: Golden Cross acquires Reedy Creek
 - Adelong acquires Lauriston
 - SXGC reaches \$3bn mkt. cap.
- 2026**
 - Crossroads Gold lists on TSXV under symbol 'CRG'

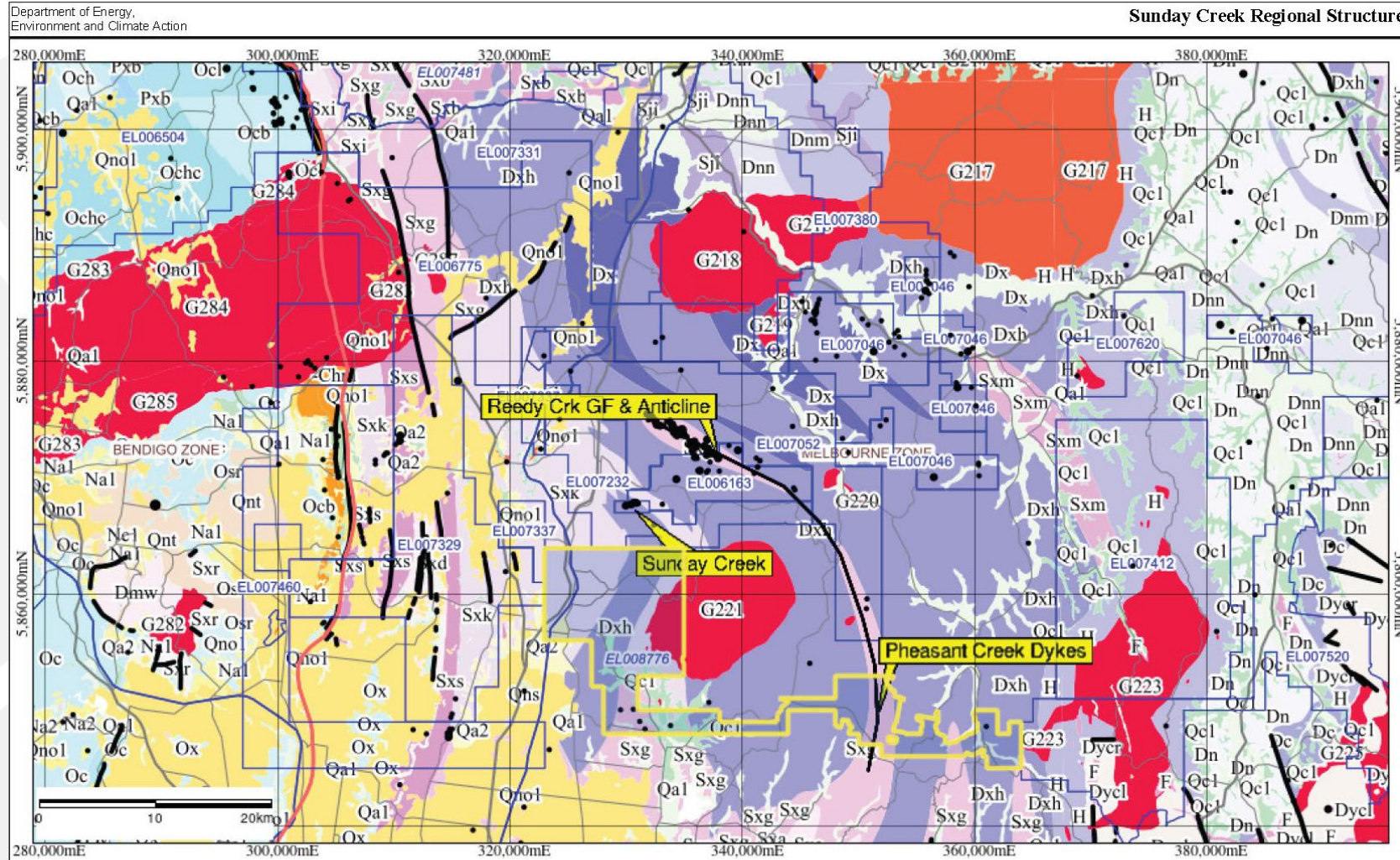
Southeast Australian Fold Belt Geology

Occurs within the Melbourne Zone of the Tasman Fold Belt

- Occurs within the Melbourne Zone of the Tasman Fold Belt, which is composed of Siluro-Devonian sediments and Mid-Devonian granitic intrusions and volcanics
- Within the Melbourne Zone, gold mineralization is later than in the Ordovician Bendigo Zone and is dated at Mid-Devonian around 360 m.y.
- Gold mineralization within the Melbourne Zone is characterized by an association with arsenic and antimony (Au-As-Sb), with potentially economic antimony levels of mineralization
- Cost-effective soil geochemistry is an effective exploration tool in this district, with robust pathfinder elements using portable XRF technology



Pheasant Creek Regional Geology



Sunday Creek Regional Structures

- Mines and Mineral Occurrences**
- MAJOR
 - INTERMEDIATE
 - MINOR
 - UNKNOWN
- Current Mineral Exploration Licences**
- Dc (10)
 - Dmh (1)
 - Dmw (2)
 - Dn (74)
 - Dnm (4)
 - Dnn (32)
 - Dx (10)
 - Dxh (66)
 - Dxp (10)
 - Dyad (1)
 - Dycl (11)
 - Dycr (19)
 - Dyt (23)
 - F (36)
 - G217 (16)
 - G218 (2)
 - G219 (1)
 - G220 (2)
 - G221 (3)
 - G222 (1)
 - G223 (16)
 - G225 (1)
 - G227 (1)
 - G275 (1)
 - G276 (4)
 - G282 (1)
 - G283 (9)
- Structural Zones (boundaries)**
- Structural Zones (boundaries)
- Geological Lines & Faults 1M**
-
- Railways - 500K**
- raster
 - Polygon
 - Line
 - Point
- Roads (500K)**
- Major Roads
 - Other Roads
- Geological Polygons 250K**



Disclaimer: This map is a snapshot generated from Victoria Government data. This material may be of assistance to you but the State of Victoria does not guarantee that the publication is without flaw of any kind or is wholly appropriate for your particular purposes and therefore disclaims all liability for error, loss or damage which may arise from reliance upon it. All persons accessing this information should make appropriate enquiries to assess the currency of the data.

Map Scale: 1:428,508
Projection: MGA94 55

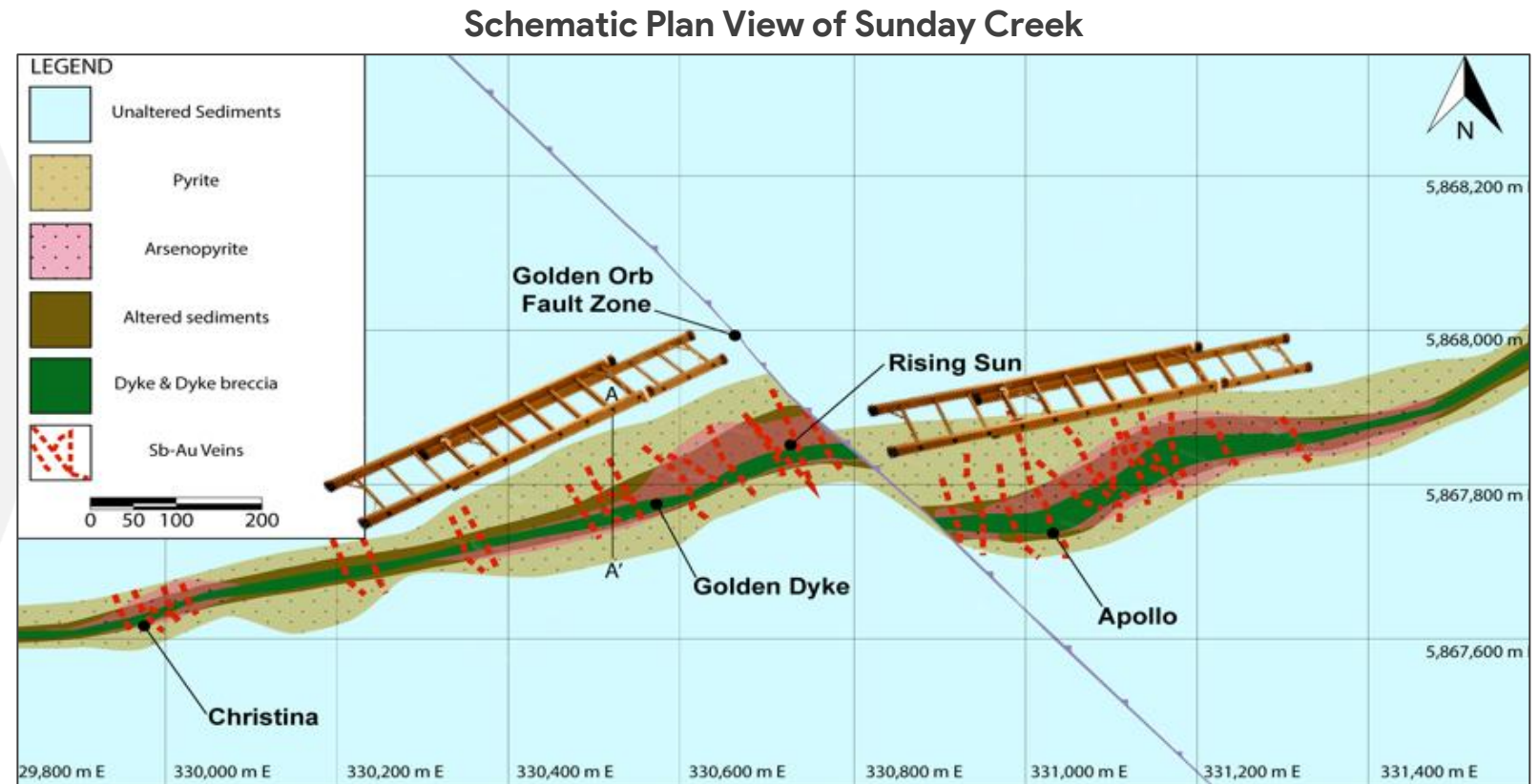
The map contains zonal grid lines that extends beyond their zone boundary.



Pheasant Creek Neighbour: Southern Cross Gold

Ladder quartz veins lie perpendicular to the east-west Sunday Creek dyke

- Mineralization occurs as disseminated pyrite surrounding a halo of arsenopyrite, which in turn surround the quartz veins hosted by the dyke and nearby altered sediments
- Orientation of north-south quartz veins located mostly within the dykes referred to as ladder veins
- Overall structure necessitates oblique drilling patterns along strike of the dyke to intersect as many quartz veins as possible
- Descriptions from 1890s mining operations of the Pheasant Creek dykes are very similar structurally

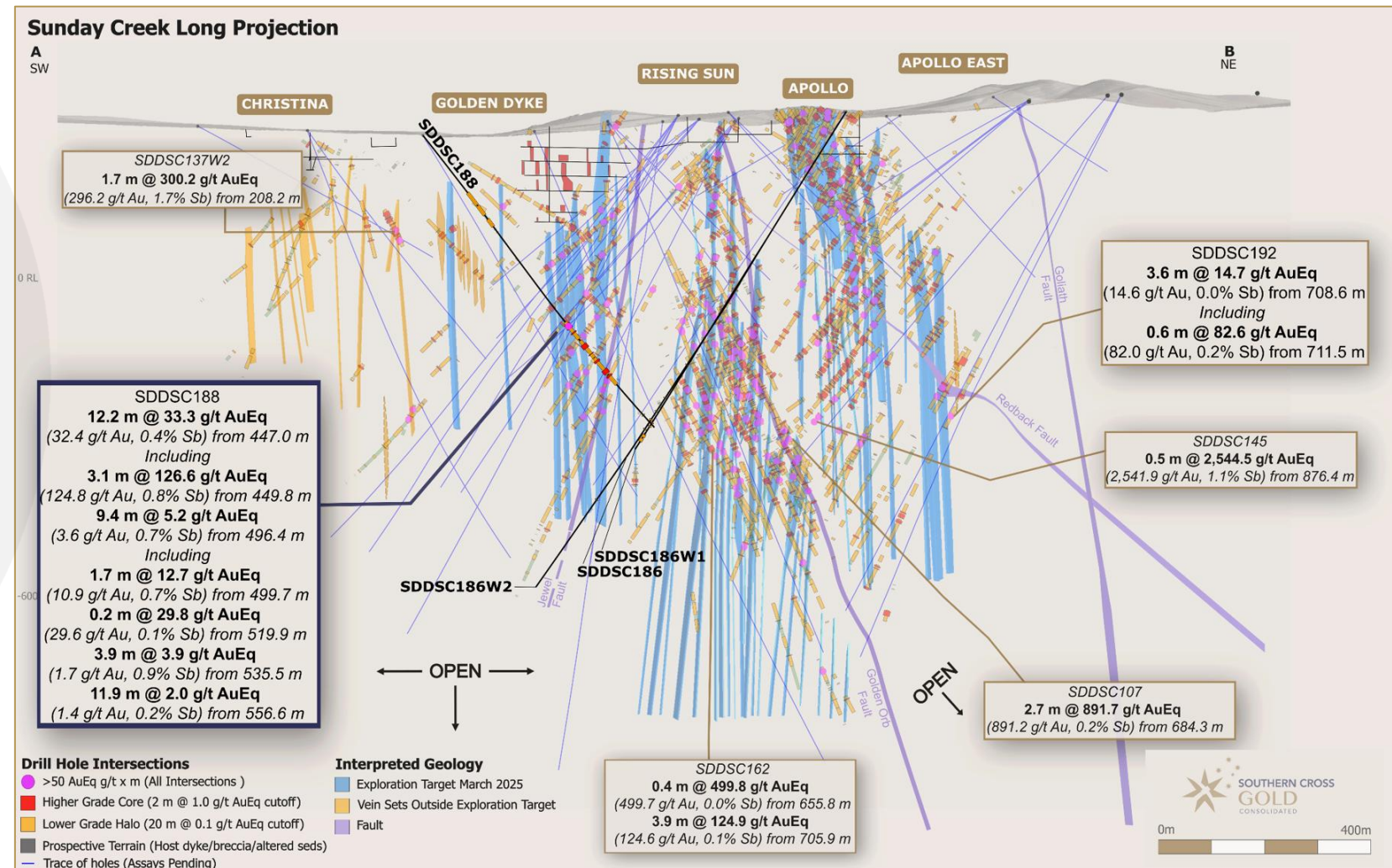


Source: Southern Cross public disclosure.

Long Section of Sunday Creek

Delivered 79 composite intersections exceeding 100 g/t Au, 66 between 50-100 g/t Au, 97 grading >10% Sb

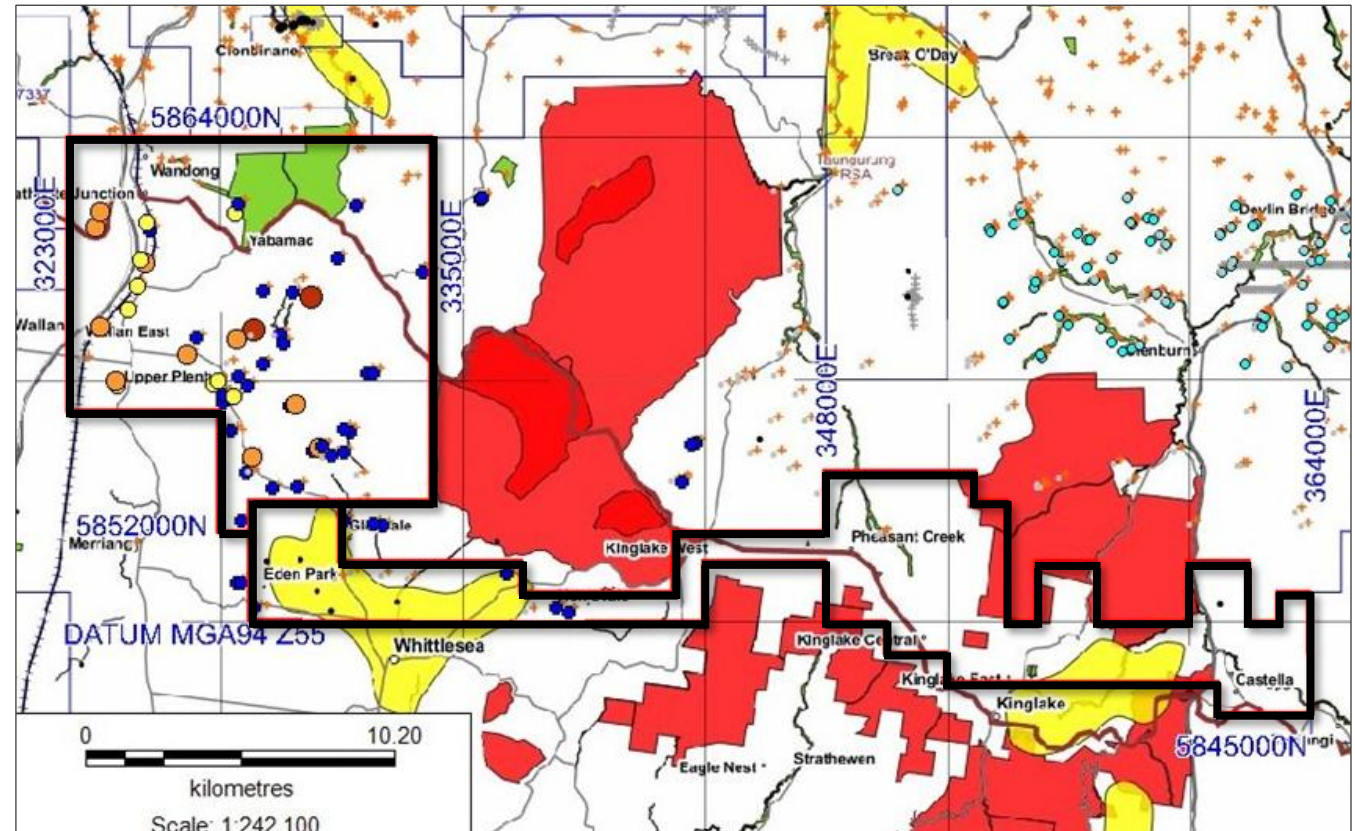
- 559m Mineralised Corridor Confirmed: SDDSC196 intersected 16 vein sets across 559m from 376-936m downhole, avg. 559m @ 2.5 g/t AuEq (2.1 g/t Au, 0.2% Sb) uncut, with 6 intervals >20 g/t AuEq, incl. 3 assays >100 g/t Au
- Ultra High-Grade Intersection: SDDSC196 delivered 1.3 m @ 670 g/t AuEq (nearly 20 oz/t gold) from 869m depth
- Highlight Intercepts:
 - 1.0m @ 2,318.9 g/t AuEq (2,318.4 g/t Au, 0.3% Sb) from 684.3m
 - 3.6m @ 393.4 g/t AuEq (391.9 g/t Au, 0.8% Sb) from 737.1m
 - 20.0m @ 63.7 g/t AuEq (62.7 g/t Au, 0.5% Sb) from 430.0m



Pheasant Creek West Block – Whittlesea Area

Anomalous antimony geochemistry and several old gold prospects to explore

- The Whittlesea goldfield (lower left yellow area) hosts hard rock gold prospects: Timm’s No. 1, Timm’s No. 2 Reef and King’s Reef.
- No. 1 Reef strikes east-west and has had no modern exploration and have no historic reports or production figures
- The main western area contains widespread stream sediment antimony anomalism, which have northeasterly and northerly trends
- Very few stream sediment gold assays have been carried out numbering a total of eleven within the whole 233 km² (or 1 per 21 km²). Comprehensive stream sediment sampling will be used to focus further exploration



National Parks (red) and goldfields (yellow)

Pheasant Creek East Block – Kinglake Area

The Pheasant Creek dykes offer an overall prospective strike length of ~6km

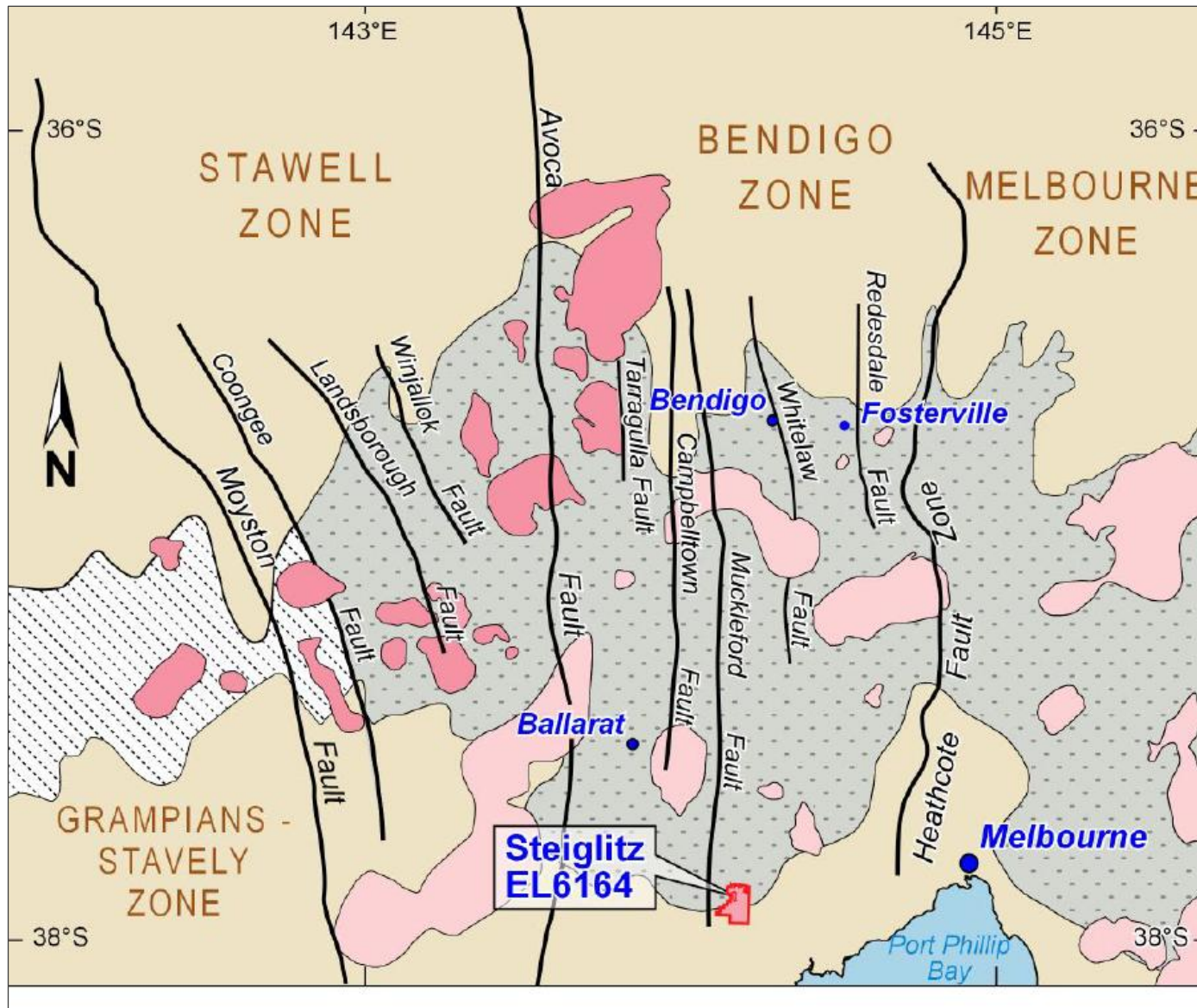
- Encompasses a series of auriferous dykes that have seen small-scale historical mining for gold over considerable lengths and offer an overall prospective strike length of ~6km. Significant mapped auriferous dyke widths range from 3.7-9.1m, which therefore could host a major deposit
- The producing Costerfield Mine (Alkane Resources) is located ~55km northwest of Pheasant Creek and produced ~43,000 oz Au and 1,282t of antimony in CY2024
- The dykes are strongly altered to clay in the weathered zone and therefore are not obvious to locate in the field. They are non-magnetic as well, making airborne magnetics ineffective
- Proximity to cross faults perpendicular to the dyke strike enhance the gold mineralization through dilation of the fault intersection causing wider zones of brecciation and veining
- Southern Cross' Sunday Creek Project occurs nearby in similar geology where quartz veinlets occur orthogonally throughout diorite dykes that strike east west
- A grid-based soil sampling program will locate the true surface extent of the gold mineralization associated with these dykes. Cost-effective soil geochemistry is an excellent and effective exploration tool in this district, with robust pathfinder elements
- Detailed soil geochemistry and subsequent drill testing of auriferous dykes warranted, as these zones represent compelling exploration targets with potential to host significant in situ high-grade gold mineralization


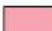
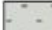

Dyke Mining History

Overall potential of ~6km of auriferous dykes for exploration

- **Kinglake auriferous dyke:** strikes east-west at 80 degrees and dips north at 70 degrees. It extends for ~2,000m and it has been worked profitably for gold for 800m in length. The dyke crosses the Silurian strata at a high angle. The dyke is composed of hydrothermally altered diorite with quartz stringers and veins extending from wall to wall of the dyke and ranges from 4.6m to 9.1m wide where mapped. The dyke carried gold throughout its entire body. Two tons of dyke material yielded 18.7 g/t Au when tested. The gold is mostly carried in quartz veinlets up to 15cm in thickness and generally dip 70-80 degrees to the west within the dyke (Moon, 1896). The location of this dyke has not yet been established.
- **Captain's Creek auriferous dyke:** west of the Kinglake Dyke and has a parallel bearing to the Kinglake Dyke. Both the dyke and surrounding strata are strongly weathered or hydrothermally altered. The dyke is "highly charged with cubical pyrites, as are also the quartz leaders (veinlets) traversing the dyke". This dyke is very similar to the Kinglake Dyke (Moon, 1896). The mine workings are on private property.
- **Pheasant Creek dyke:** west of the Kinglake and Captain's Creek dykes and is a soft decomposed diorite dyke averaging 3.7m wide and having a north-westerly strike. The dyke was worked along strike by open cuts and an adit. "Gold is contained in quartz and ferruginous veins traversing the dyke." Alluvial gold is found in the nearby creeks and gullies. (Murray 1894). The mine workings have not been located but the area is well established.
- **Captain's Creek Dyke and Pheasant Creek Dyke** are along strike from each other, and future exploration will assess for possible regional continuity.

Geological Setting of Steiglitz



-  Late Devonian granite
-  Early Devonian granite
-  Lachlan orogenesis
-  Delamarian orogenesis

Steiglitz EL6164 - Victoria Geological Setting

50 km

Aug 2019

NHC

Notes

Sources & References

- LIDGEY, E., 1895. Kinglake near Whittlesea. Geological Survey of Victoria Unpublished Report 1895/2410. Mines Department, Victoria, 5 pp.
- MOON, R.A., 1896. Kinglake and Captains Creek diorite dykes. Geological Survey of Victoria Unpublished Report 1896/3222. Department of Mines and Water Supply, Victoria, 4 pp.
- MOON, R.A., 1896. Dykes at Kinglake and Captain's Creek. Geological Survey of Victoria Unpublished Report 1896/5371, 4396, 3802, 3781... Department of Mines and Water Supply, Victoria, 14 pp.
- MURRAY, R.A.F., 1894. Quartz workings, Pheasant Creek, near Kinglake. Geological Survey of Victoria Unpublished Report 1894/1302, 3966. Mines Department, Victoria, 4 pp.

Footnotes

- Slide: “Investment Highlights” – (1) Source: TMX Group, as at Apr 16, 2026. (2) Source: Public Disclosure, internal estimates.
- Slide: “The Fiore Group” – (1) Source: TMX Group, as at Apr 16, 2026. All figures in C\$. (2) Source: Public disclosure, as at Apr 16, 2026. Includes WRLG Apr-24 closing of convertible linked notes. Excludes all CAMB.V (formerly Ascot) financings prior to December 2025 and excludes all PEX financings prior to June 2025. Includes NexGold’s Sprott Royalty of \$24M in 2025. Includes closing of Crossroads RTO subscription receipt financing of \$5.2M.
- Slide: “The Victoria State Gold Rush – The Players” – Source: Public disclosure, market cap as per TMX Group as at Apr 16, 2026. All figures in C\$.
- Slide: “Capital Structure” – (1) Share Price as at April 16, 2026. (2) Options as per 2026 equity incentive issuance. (3) Cash post TSXV listing. (4) Based on basic basis.
- Slide: “Victoria State, Australia” – (1) Source: The Fraser Institute. (2) Source: Australian Bureau of Statistics (2024). (3) Source: Resources Victoria ([link](#)).
- Slide: “Neighbour: Southern Cross Gold” – (1) Source: TMX Group, as at Apr 16, 2026. (2) Source: Southern Cross Gold website (accessed Apr 16, 2026). Figure as at August 31, 2025.
- Slide: “Steiglitz: Historical Production in Bendigo Zone” – (1) Source: Figures are pre-Fosterville modern gold production, which produced 277k oz from heap leaching during 1989-2003 and the 4.4M oz from 2005 to 2024. Resources at end of 2024 are 3.3M oz.
- Slide: “Timeline of Gold Mining in Victoria” – Source: National Library of Victoria, Victorian Mines Department Earth Resources Victoria, AMC Consulting.